



Darlings

A SMALL WORKS GROUP SHOW

8-18 DECEMBER 2021



CURATORIAL+CO.

***Oh Darling,
are you ready to fall in love
again this summer?***

**Close your eyes and feel the warm sun on your skin,
the salty breeze in your hair and the sounds of summer
crackling through the radio. It's December, Darling, and I'm
ready to fall in love!**

**Back for its second year, Darlings small works group show
is the enchanting escape you've been dreaming of.
Filled with stunning pieces and pairs of all persuasions;
sculpture, photography, still life, works on
paper, ceramics, figurative, abstraction and more,
there's something for everyone.**

**Our biggest show ever, with over 50 local and
international artists and 140+ artworks available, we are
tickled pink to bring this show to our
Redfern space. Come and fall in love with Darlings, they
are just the sweetest little things around.**

Sophie, Tash, Claire + Hayley



ALICHIA VAN RHIJN

Reflection (Everyone is Everyone Else)

Glazed earthenware

30cm x 21cm x 19.5cm

\$ 1950



ALICHIA VAN RHIJN

Someone's Ghost

Glazed earthenware

23cm x 15.5cm x 16cm

\$980



AMANDA SCHUNKER

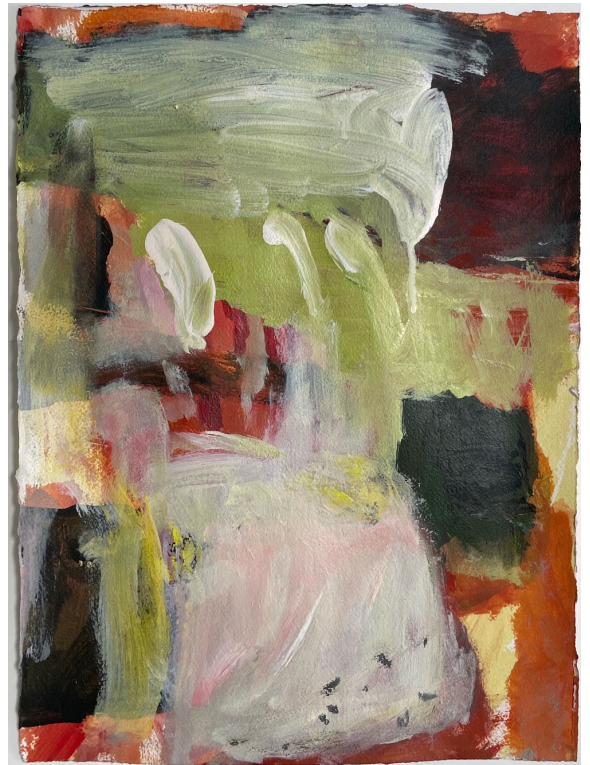
Totem 1

Acrylic, pastel + collage on Arches paper

50cm x 40.5cm

Framed in oak with Perspex

\$950



AMANDA SCHUNKER

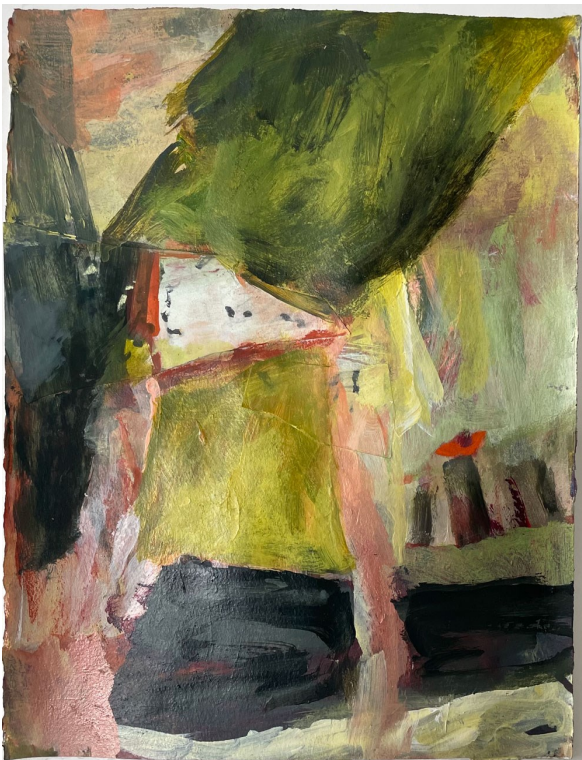
Totem 2

Acrylic, pastel + collage on Arches paper

50cm x 40.5cm

Framed in oak with Perspex

\$950



AMANDA SCHUNKER

Totem 3

Acrylic, pastel + collage on Arches paper

50cm x 40.5cm

Framed in oak with Perspex

\$950



AMANDA SCHUNKER

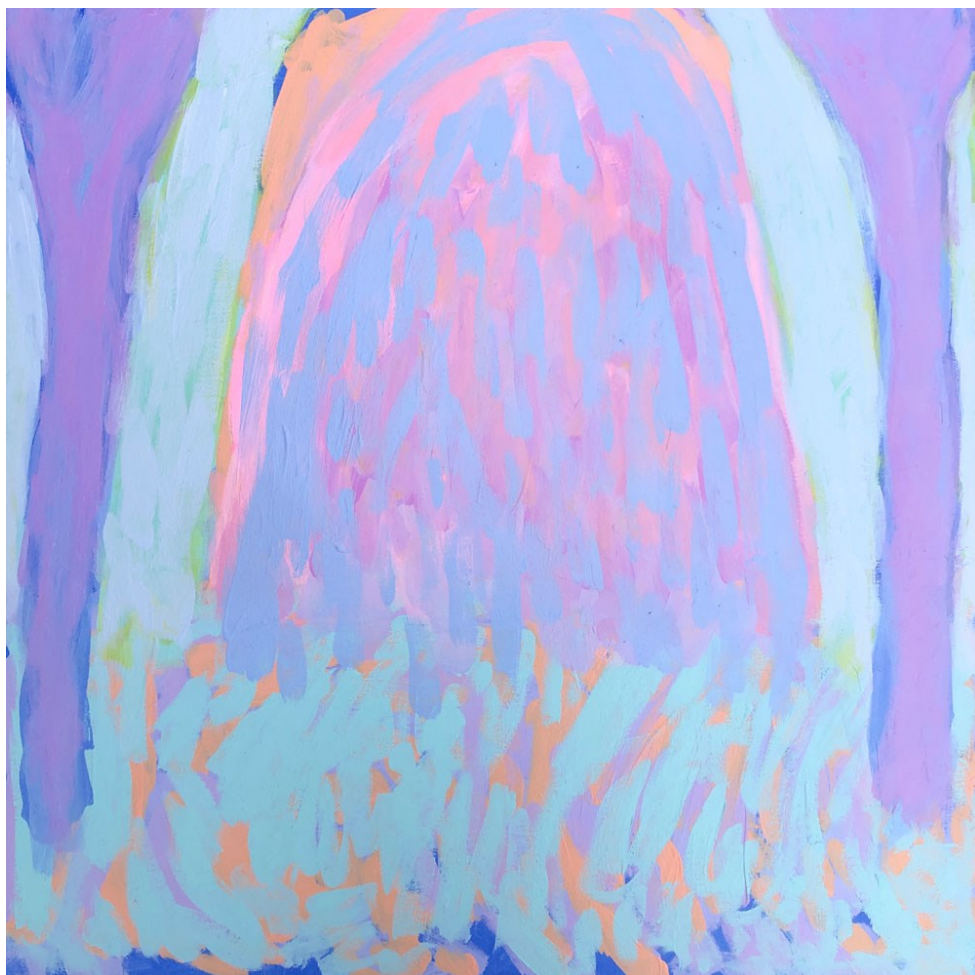
Totem 4

Acrylic, pastel + collage on Arches paper

50cm x 40.5cm

Framed in oak with Perspex

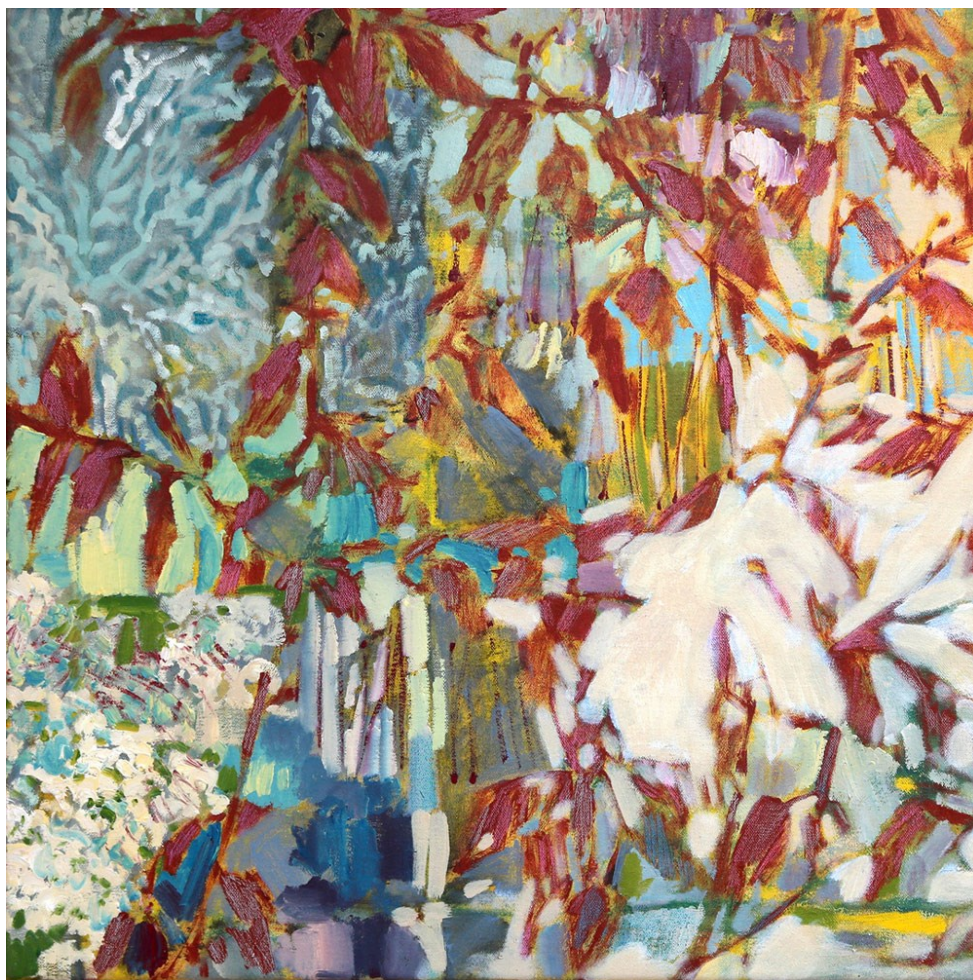
\$950



AMBER HEARN
Milk Sky Mountain
 Acrylic on canvas
 50cm x 50cm
 Framed in raw oak
 \$1900



AMBER HEARN
Milk Sun Mountain
 Acrylic on canvas
 50cm x 50cm
 Framed in raw oak
 \$1900



AMY WRIGHT

The Walled Garden Part 1

Acrylic, gesso, oil paint +
prismacolor pencil on canvas

50.5cm x 50.5cm

Framed in Victorian ash

\$1250



AMY WRIGHT

The Walled Garden Part 2

Acrylic, gesso, oil paint +
prismacolor pencil on canvas

50.5cm x 50.5cm

Framed in Victorian ash

\$1250



ANA YOUNG

Amongst the Shadows III

Acrylic on polycotton

34cm x 44cm

Framed in raw oak

\$1100



ANA YOUNG

Looking Out

Acrylic on polycotton

34cm x 44cm

Framed in raw oak

\$1100



ANA YOUNG

Amongst the Shadows II

Acrylic on polycotton

34cm x 44cm

Framed in raw oak

\$1100



ANDREA SINCLAIR

Gold of Summer

Oil on board

43cm x 43cm

Framed in dark wood

\$2100



ANDREA SINCLAIR

Tiny Kisses

Oil on board

43cm x 43cm

Framed in dark wood

\$2100



ANN GORDON

Snow Melt Beyond the Gate, Road to O'Connell

Mixed media on canvas

39cm x 39cm

Framed in raw oak

\$700



ANN GORDON

Snow Over Verge, Road to O'Connell

Mixed media on canvas

39cm x 39cm

Framed in raw oak

\$700



ANN GORDON

Ghost Fence, Road to O'Connell

Mixed media on canvas

39cm x 39cm

Framed in raw oak

\$700



ARA DOLATION

Embrace

Earthenware glaze oxide

25cm x 15cm x 5cm

\$750



ARA DOLATION

Place

Earthenware glaze oxide

18cm x 22cm x 22cm

\$750



ARA DOLATION

Anu

Earthenware glaze oxide

24cm x 12cm x 12cm

\$750



ARA DOLATION

Temple

Earthenware glaze oxide

21cm x 13cm x 16cm

\$700



ASH LESLIE

Day Break

Acrylic on canvas

50cm x 40cm

Framed in Scribbly Gum

\$750



ASH LESLIE

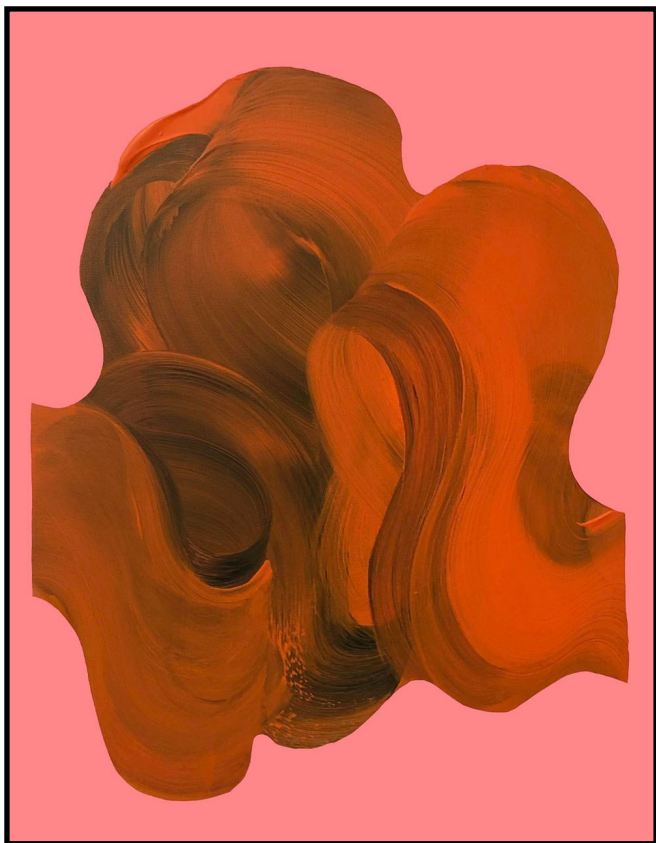
Sundown

Acrylic on canvas

50cm x 40cm

Framed in Scribbly Gum

\$750



BARBARA KITALLIDES

Giant

Acrylic on canvas

54cm x 44cm

Framed in black

\$1600



BARBARA KITALLIDES

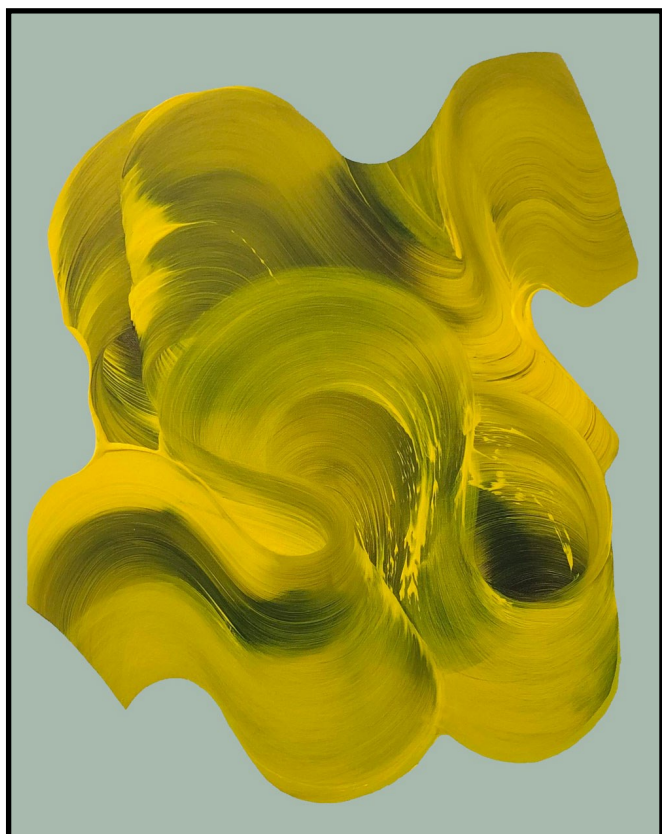
Hercules

Acrylic on canvas

54cm x 44cm

Framed in black

\$1600



BARBARA KITALLIDES

Super Human

Acrylic on canvas

54cm x 44cm

Framed in black

\$1600



BEN CRAWFORD

Anywhere I Lay My Head

Oil, acrylic, oil stick, charcoal on linen

46cm x 46cm

Framed in stained oak

\$1600



BEN CRAWFORD

Conditional Contentment

Oil, acrylic, oil stick, charcoal on linen

46cm x 46cm

Framed in stained oak

\$1600



BEN CRAWFORD

The Virtues of Existence and Other Dreams

Oil, acrylic, oil stick, charcoal on linen

40.5cm x 30.5cm

Framed in stained oak

\$1300



BRETT ANTHONY MOORE

Merge

Acrylic polymer paint skin on

bleached eco-ply

44cm x 45cm

\$1400



CAM EDWARD

Fold It In

Acrylic on canvas

50cm x 40cm

Unframed

\$1900



CAM EDWARD

Dollop Fold

Acrylic on canvas

50cm x 40cm

Unframed

\$1900



CASSIE HANSEN

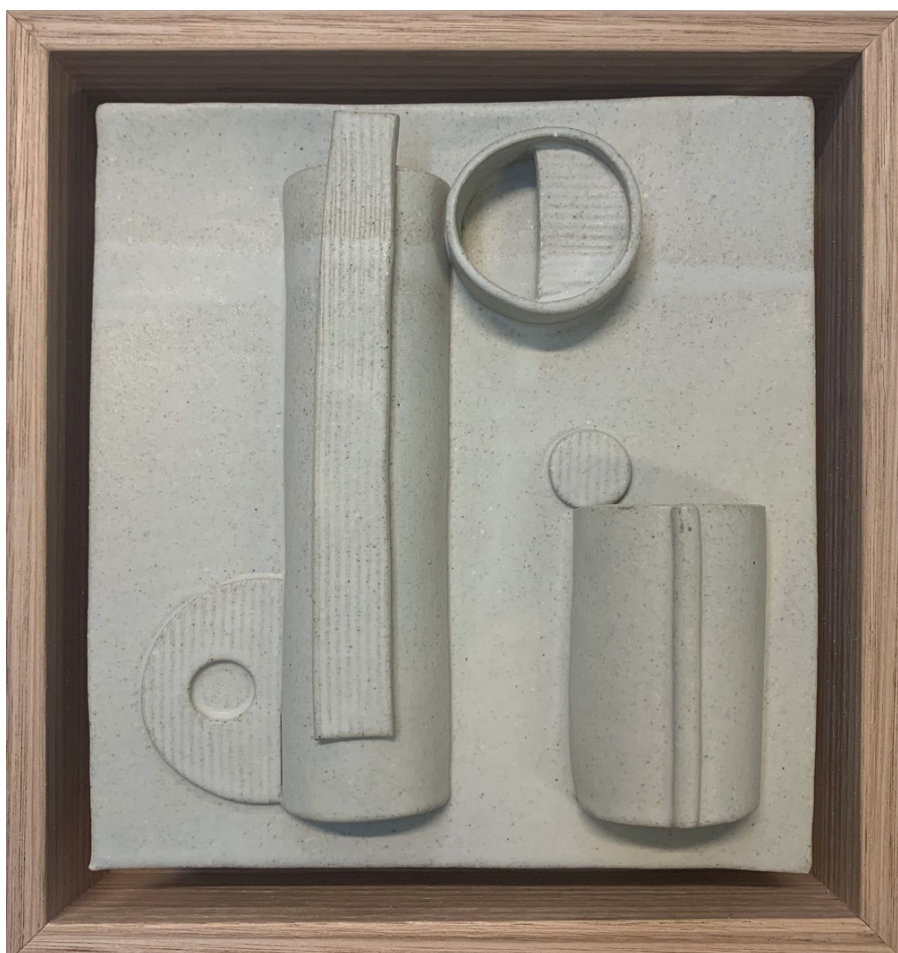
Facades II

White mid-fire clay

21cm x 18cm

Framed in raw oak

\$500



CASSIE HANSEN

Facades I

White mid-fire clay

23cm x 21.5cm

Framed in raw oak

\$550



CHANEL TOBLER

When Hard Becomes Soft

Pencil, oil pastel + pastel on paper

48cm x 38cm

Framed in raw oak with glass

\$1400



CHANEL TOBLER

The Minute to Minute Recount

Pencil, oil pastel + pastel on paper

55cm x 48cm

Floated on white matte board with Tasmanian oak

\$1550



CHANEL TOBLER

When Hard Becomes Soft

Pencil, oil pastel + pastel on paper

48cm x 38cm

Framed in raw oak with glass

\$1400



CHANEL TOBLER

It Took a Moment to Achieve

Pencil, oil pastel + pastel on paper

48cm x 38cm

Framed in raw oak with glass

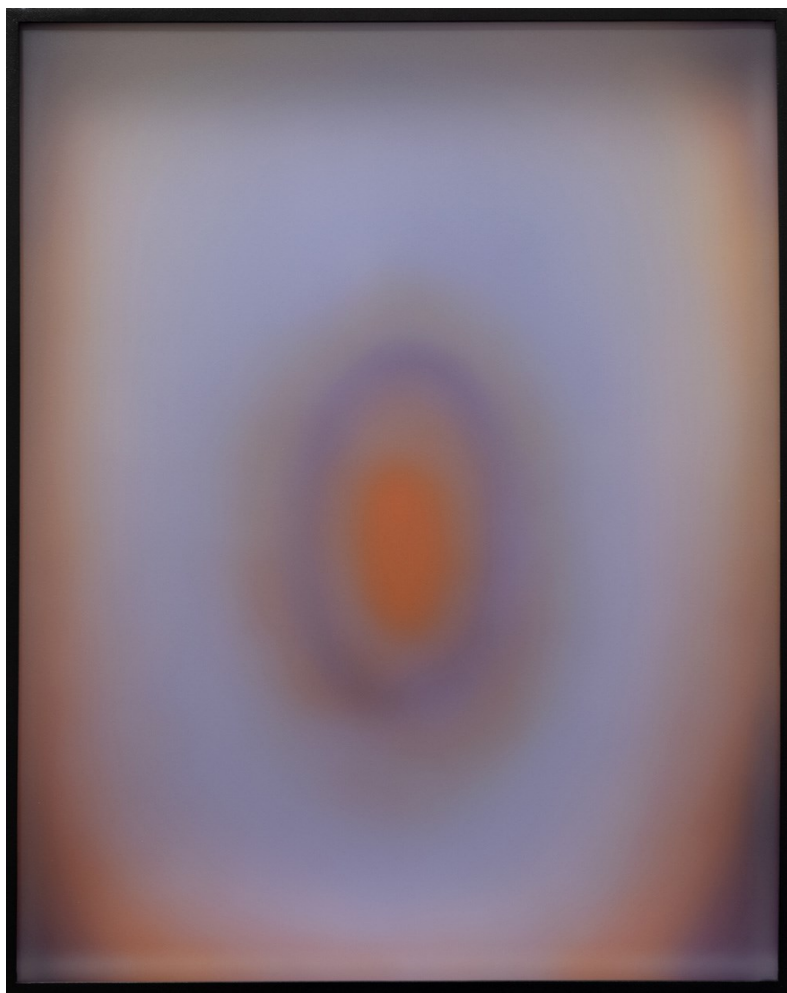
\$1400



CHLOE CADAY
Afternoon Light II
 Oil on linen
 49cm x 44cm
 Framed in raw oak
 \$950



CHLOE CADAY
Afternoon Light I
 Oil on linen
 44cm x 49cm
 Framed in raw oak
 \$950



DANIEL O'TOOLE

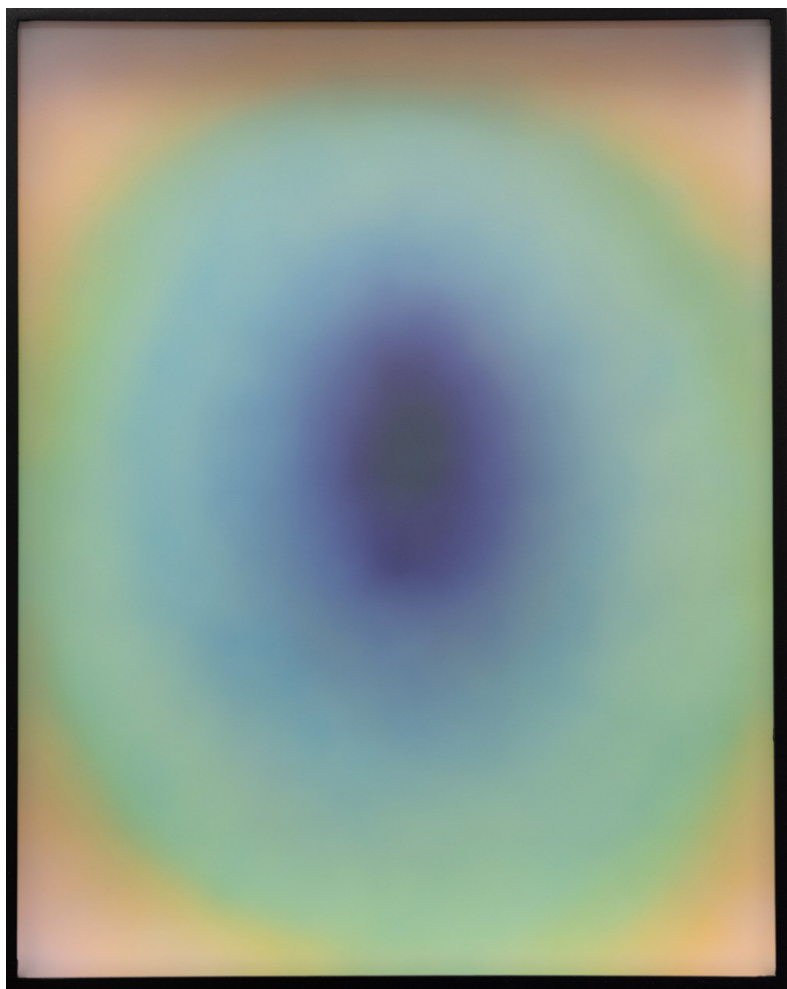
Orb 1

Synthetic polymer on timber,
aluminium, acrylic + mirror

50cm x 40cm x 7cm

Framed in black aluminium

\$2600



DANIEL O'TOOLE

Orb 2

Synthetic polymer on timber,
aluminium, acrylic + mirror

50cm x 40cm x 7cm

Framed in black aluminium

\$2600



DENNIS GOLDING

Koori #2

Acrylic on canvas

50cm x 50cm

Unframed

\$980



DENNIS GOLDING

Koori #1

Acrylic on canvas

50cm x 50cm

Unframed

\$980



DIANA MILLER
I Can Tell You Anything
 Acrylic on board
 25cm x 20cm
 Framed in oak
 \$790



DIANA MILLER
Around the Next Corner
 Acrylic on board
 25cm x 20cm
 Framed in raw oak
 \$790



ELIZABETH LEWIS
Pink Dalmatian Lolly Snake
 Stoneware, underglaze + porcelain
 11cm x 8cm x 7cm
 \$150



ELIZABETH LEWIS
Raspberry Bon Bons Lolly Snake
 Stoneware, underglaze + porcelain
 10cm x 10cm x 8cm
 \$175



ELIZABETH LEWIS
Pistachio Ice Cream with Toppings Lolly Snake
 Stoneware, underglaze + porcelain
 7.5cm x 7cm x 5.5cm
 \$125



ELIZABETH LEWIS
Berry Lolly Snake
 Stoneware, underglaze + porcelain
 10cm x 10cm x 8cm
 \$175



EMILY HAMANN

Amplexus

White raku finished with
a white terra sigillata

16cm x 21cm

\$1200



EMILY HAMANN

Nexus

White Raku finished with
a white terra sigillata

16cm x 18cm

\$1200



EMMA LINDEGAARD
Elements Variation
 Stoneware clay + ecru crackle glaze
 38.5cm x 40cm x 11cm
 \$800



EMMA LINDEGAARD
Tower of Silence
 Stoneware clay + ecru crackle glaze
 32cm x 21cm x 11cm
 \$900



FLEUR STEVENSON

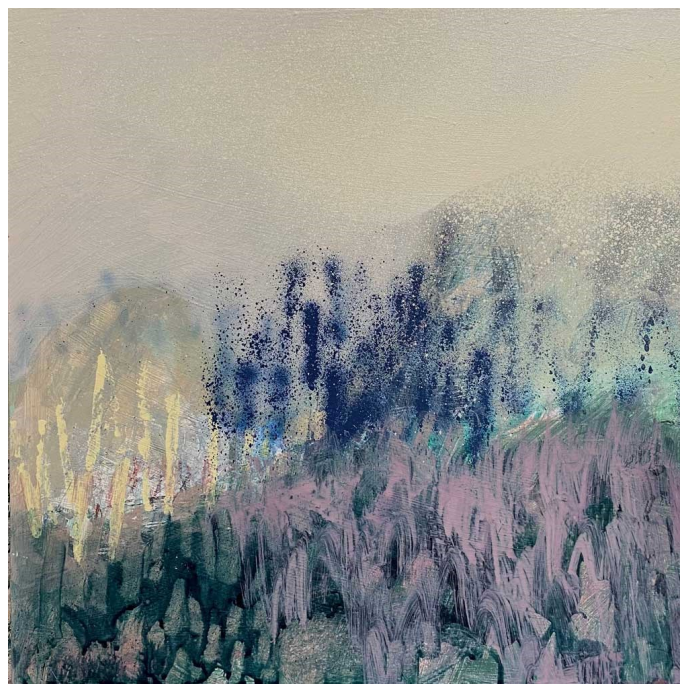
Darkness

Acrylic + spray paint on board

42cm x 42cm

Framed in raw oak

\$950



FLEUR STEVENSON

Energy

Acrylic + spray paint on board

42cm x 42cm

Framed in raw oak

\$950



FLEUR STEVENSON

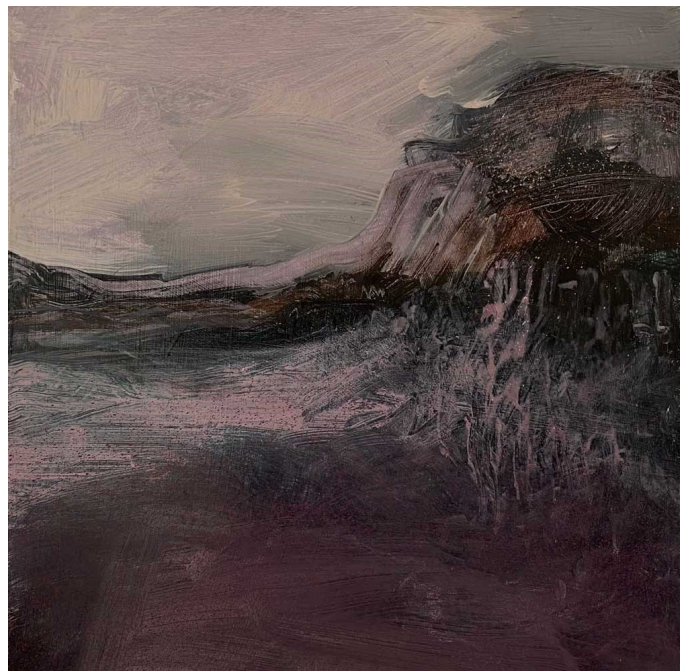
Heart

Acrylic + spray paint on board

42cm x 42cm

Framed in raw oak

\$950



FLEUR STEVENSON

Grace

Acrylic + spray paint on board

42cm x 42cm

Framed in raw oak

\$950



ILEIGH HELLIER

Tree Down at the Lagoon

Oil on Ampersand board

22cm x 23cm

Framed in raw oak

\$1200



ILEIGH HELLIER

Summer Storm

Oil on Ampersand board

22cm x 23cm

Framed in raw oak

\$1200



ILEIGH HELLIER

Viridian Lagoon

Oil on Ampersand board

22cm x 23cm

Framed in raw oak

\$1200



ILEIGH HELLIER

Deep Lagoon

Oil on Ampersand board

22cm x 23cm

Framed in raw oak

\$1200



INGRID DANIELL

*Only dreams here,
hanging for halcyon days*

Acrylic on Belgian linen

53cm x 43cm

Framed in raw oak

\$1500



INGRID DANIELL

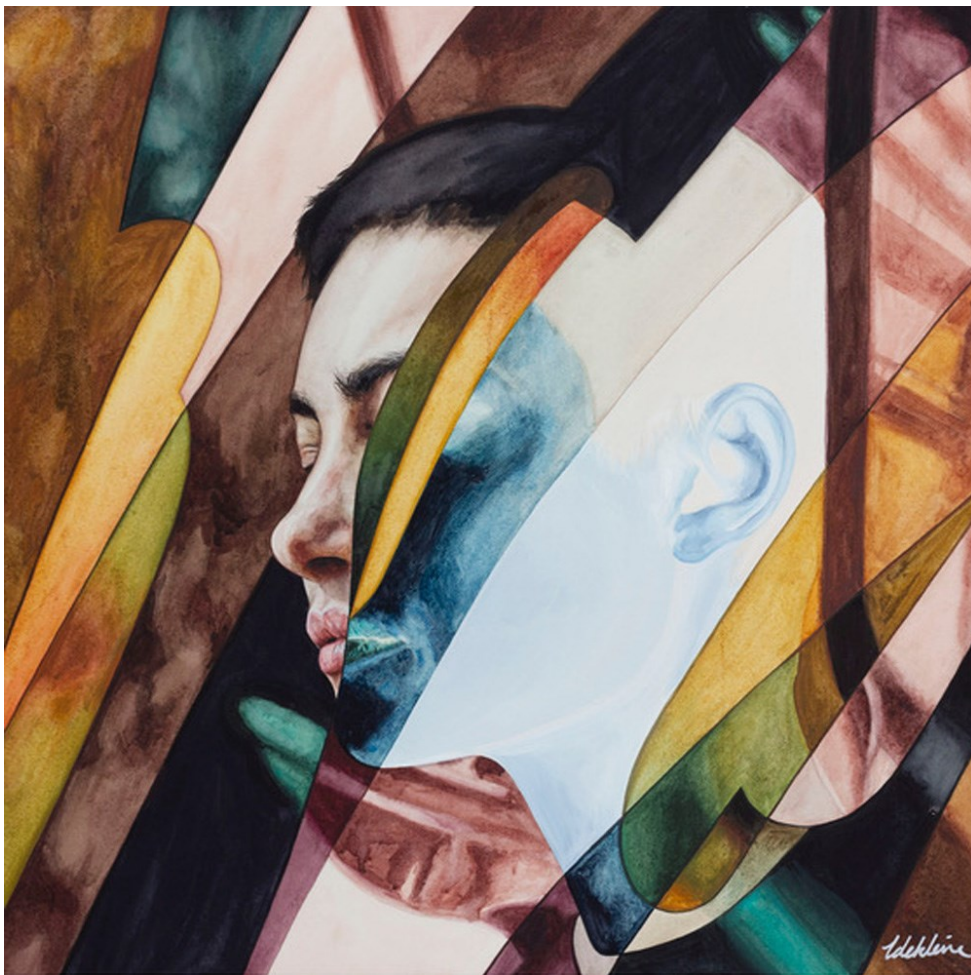
In a daze, staring at the sun

Acrylic on Belgian linen

53cm x 43cm

Frame in raw oak

\$1500



ISABELLE DE KLEINE

Our Nature 2021

Watercolour + gouache on paper

53cm x 53cm

Framed in raw oak with glass

\$2700



ISABELLE DE KLEINE

Dreaming of 2021

Watercolour + gouache on paper

53cm x 53cm

Framed in raw oak with glass

\$2700



JASMINE POOLE + CHRIS SEWELL
There's Still Life Drinks Study 2
 Pigment print on etching rag
 46cm x 30cm
 Framed in black woodgrain
 \$900



JASMINE POOLE + CHRIS SEWELL
There's Still Life Drinks Study 1
 Pigment print on etching rag
 46cm x 30cm
 Framed in black woodgrain
 \$900



JOEL VENESS

Head 812

Digital archival print on Hahnemule paper

43cm x 37.5cm

Edition 1/1

Framed in white with glass

\$1800



JOEL VENESS

Head 815

Digital archival print on Hahnemule paper

43cm x 37.5cm

Edition 1/1

Framed in white with glass

\$1800



KAITLIN JOHNSON

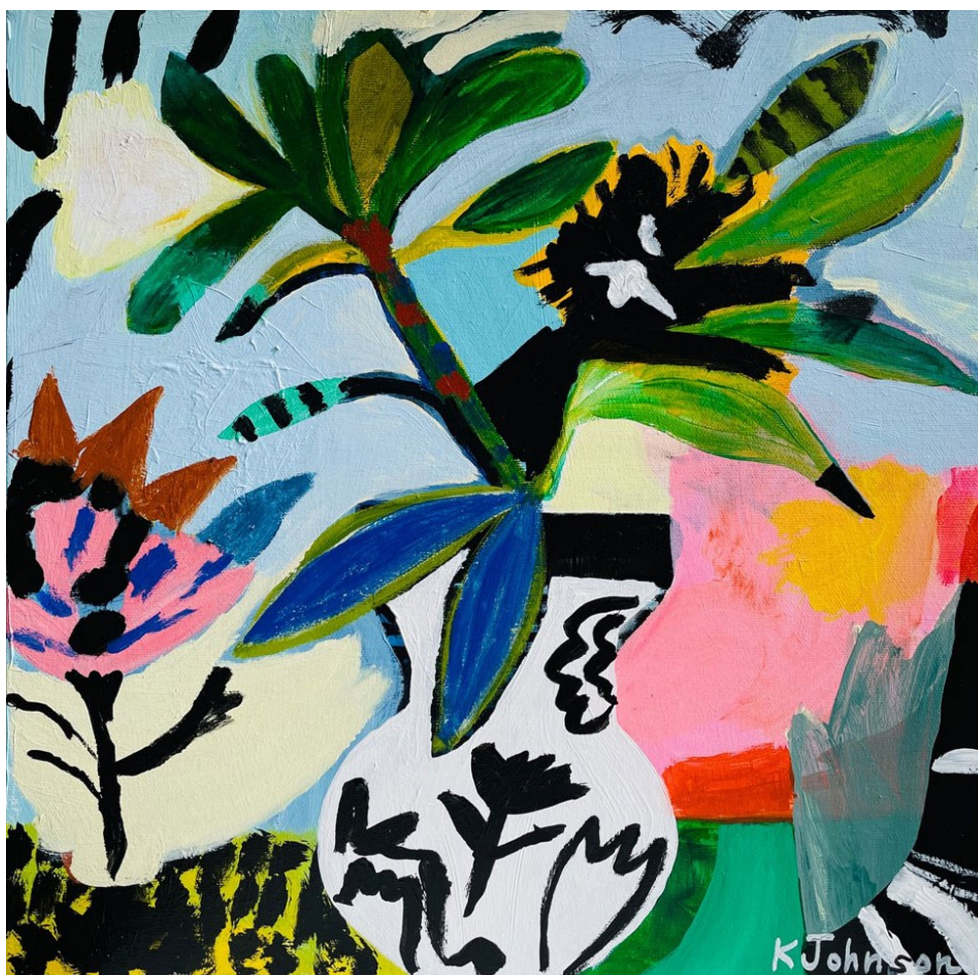
Blue Fronds

Acrylic on canvas

35.6cm x 35.6cm

Unframed

\$850



KAITLIN JOHNSON

Island Sunrise

Acrylic on canvas

35.6cm x 35.6cm

\$850



KARLIEN VN ROOYEN

Zero Inhibition Zoo Series 4

High-fired stoneware + manganese pigment

31.5cm x 16.5cm

\$900



KARLIEN VAN ROOYEN

Zero Inhibition Zoo Series 1

High-fired stoneware + manganese pigment

29cm x 14cm

\$850



KARLIEN VAN ROOYEN

Zero Inhibition Zoo Series 2

High-fired stoneware + manganese pigment

31.5cm x 16.5cm

\$900



KARLIEN VAN ROOYEN

Zero Inhibition Zoo Series 3

High-fired stoneware + manganese pigment

33cm x 15cm

\$850



KASPAR KAGI

Composition

Acrylic on canvas

50cm x 42cm

Unframed

\$3200



KASPAR KAGI

Poppies

Acrylic on canvas

50cm x 38cm

Unframed

\$2900



KATARINA WELLS

Tree of Life I

BRT fired to earthenware
temperature + white chalk finish

29cm x 22cm x 12cm

\$550



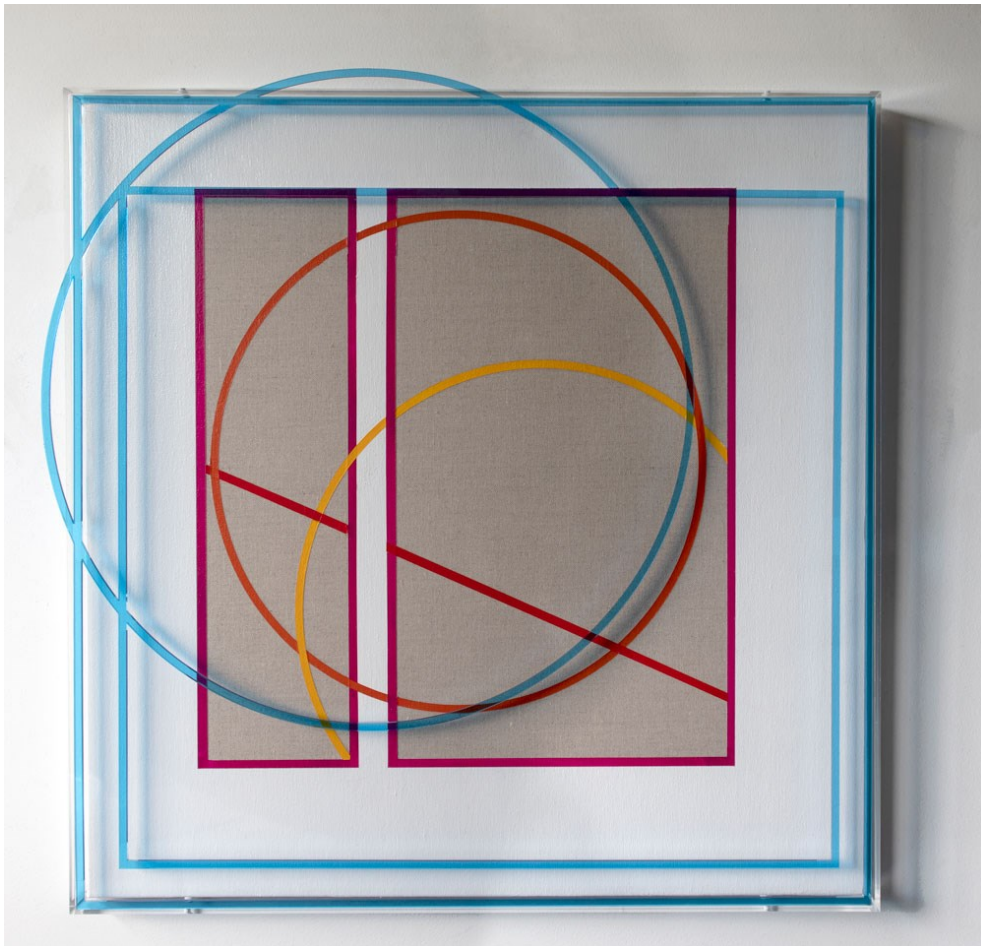
KATARINA WELLS

Tree of Life II

BRT fired to earthenware
temperature + white chalk finish

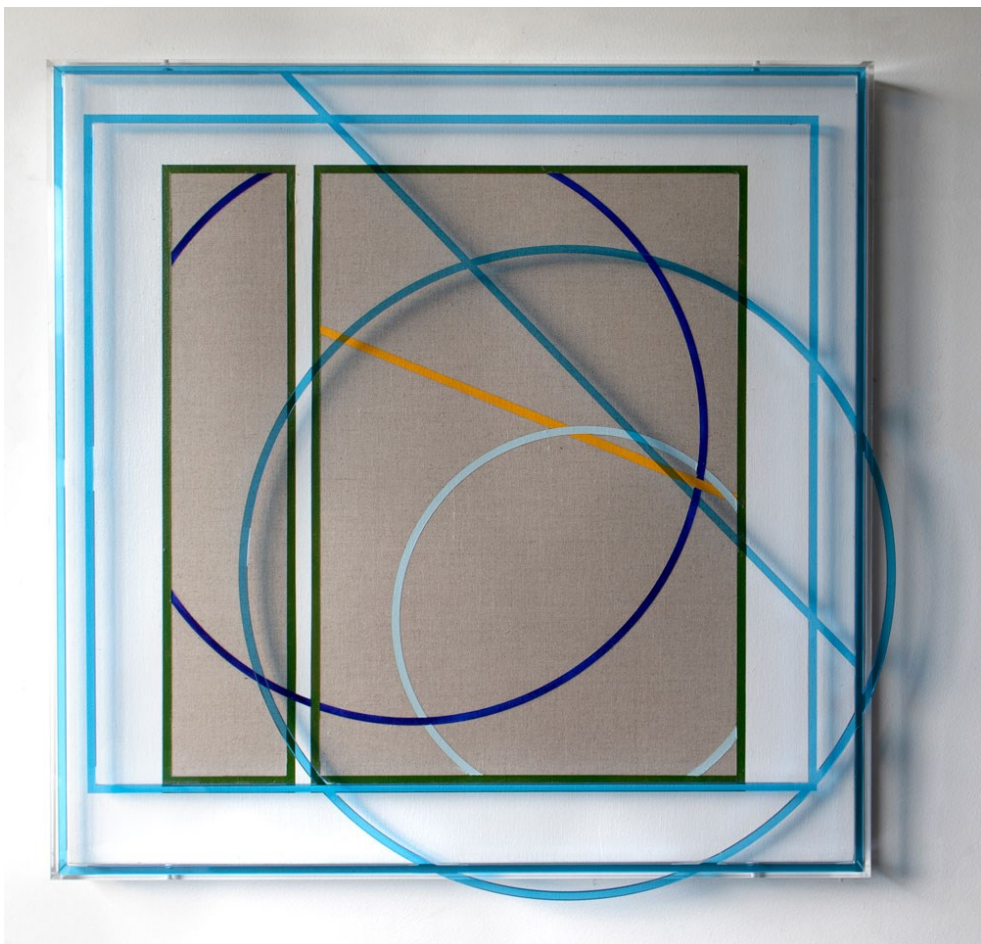
29.5cm x 20cm x 11cm

\$550



KATE BANAZI

Rerouted Narwee to Kogarah
 Synthetic polymer on Italian linen +
 custom Perspex artist's frame
 53cm x 53cm x 3.5cm
 \$1950



KATE BANAZI

Rerouted Canterbury to Mascot
 Synthetic polymer on Italian linen +
 custom Perspex artist's frame
 53cm x 53cm x 3.5cm
 \$1950



KATHRYN COWEN

Fragment IV

Acrylic + aerosol on masonite

37cm x 31cm

\$650



KERRIE OLIVER

Channelling her inner domestic goddess whilst at the laundromat

Oil + acrylic on board
30.5cm x 23cm x 4cm
Framed in raw oak
\$1000



KERRIE OLIVER

Stuck Up

Oil + acrylic on board
30.5cm x 23cm x 4cm
Framed in oak
\$1000



KERRIE OLIVER

Propped Up

Oil + acrylic on board
30.5cm x 23cm x 4cm
Framed in oak
\$1000



KERRY LEVY

Willow

Australian Verve blue stoneware

32cm H x 30cm W x 3.5cm D

\$800



KERRY LEVY

Entwined Form #21.122

Australian Verve blue stoneware

25cm x 24cm x 18cm

\$1350



LEONIE BARTON

Cul de Sac After the Firing #1

Pigment, oil + wax on birch

33.5cm H x 33.5cm W

Framed in raw oak

\$1000



LEONIE BARTON

Hill and Dale After the Firing #3

Pigment, oil + wax on birch

33.5cm H x 33.5cm W

Framed in raw oak

\$1000



LEONIE BARTON

Middle Garden After the Firing #4

Pigment, oil + wax on birch

33.5cm H x 33.5cm W

Framed in raw oak

\$1000



LEONIE BARTON

Side Paddock After the Firing #2

Pigment, oil + wax on birch

33.5cm H x 33.5cm W

Framed in raw oak

\$1000



LILLI WATERS

Inner World

Archival pigment print on platine fibre rag

Edition of 8 + 1 AP

53cm x 36cm

Framed in black with UltraVue glass

\$950



LILY CUMMINS

Far, Far Into the Forest

Acrylic, oil stick, Texta + graphite

on timber board

31cm x 31cm

Unframed

\$875



LILY CUMMINS

I Wish Thee and Thou With Me

Acrylic, oil stick, Texta + graphite

on timber board

31cm x 31cm

\$875



LUCAS WEARNE
Between the Nights
 Australian limestone
 42cm H x 30cm W x 6cm D
 Framed in Victoria ash
 \$1250



LUCAS WEARNE
Right Beside You
 Australian limestone
 42cm H x 30cm W x 6cm D
 Framed in Victorian ash
 \$1250



LYNNE FLEMONS
74 Jasmine Street
 Acrylic on canvas
 50cm x 50cm
 Framed in raw oak
 \$1100



LYNNE FLEMONS
22 Camelia Street
 Acrylic on canvas
 50cm x 50cm
 Framed in raw oak
 \$1100



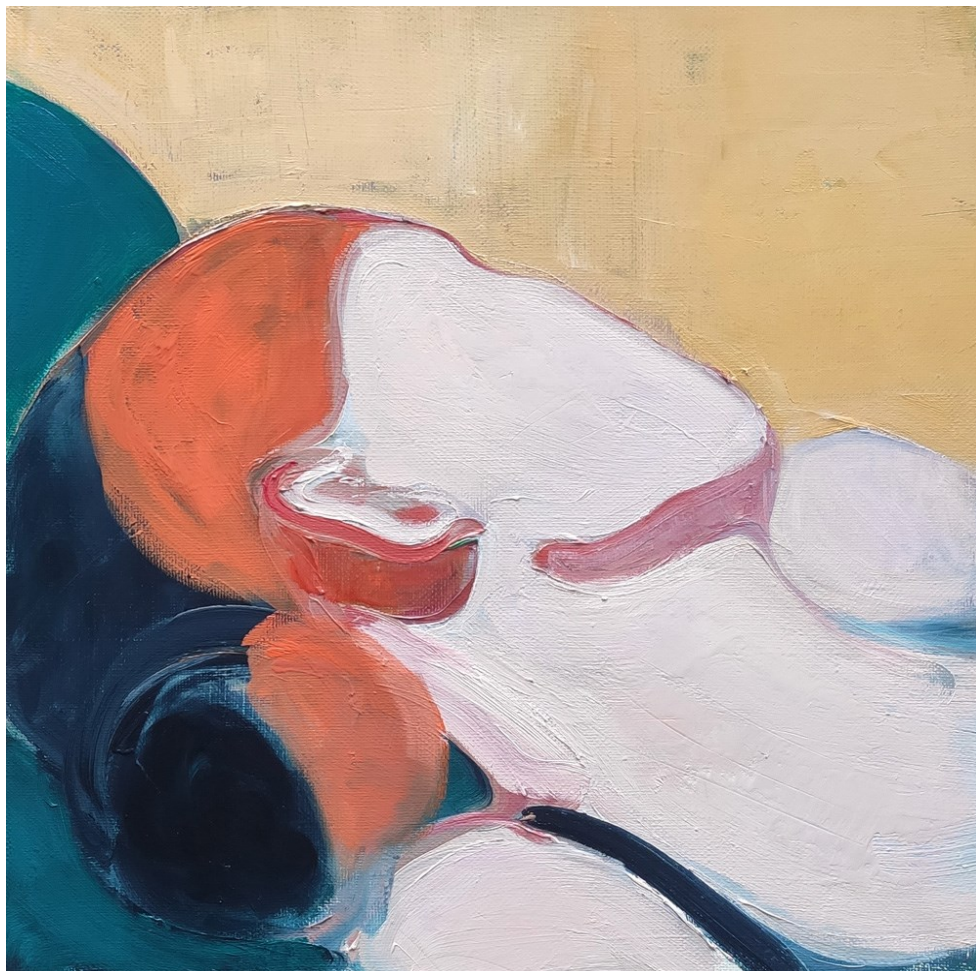
MANUELA SERJE
Meandering Thoughts
 Stoneware + glaze
 30cm x 25cm
 \$780



MANUELA SERJE
Rising Tides
 Stoneware + glaze
 30cm x 20cm
 \$750



MANUELA SERJE
As the Rainforest Cries
 Stoneware + glaze
 30cm x 30 cm
 \$950



MARIA KOSTAREVA

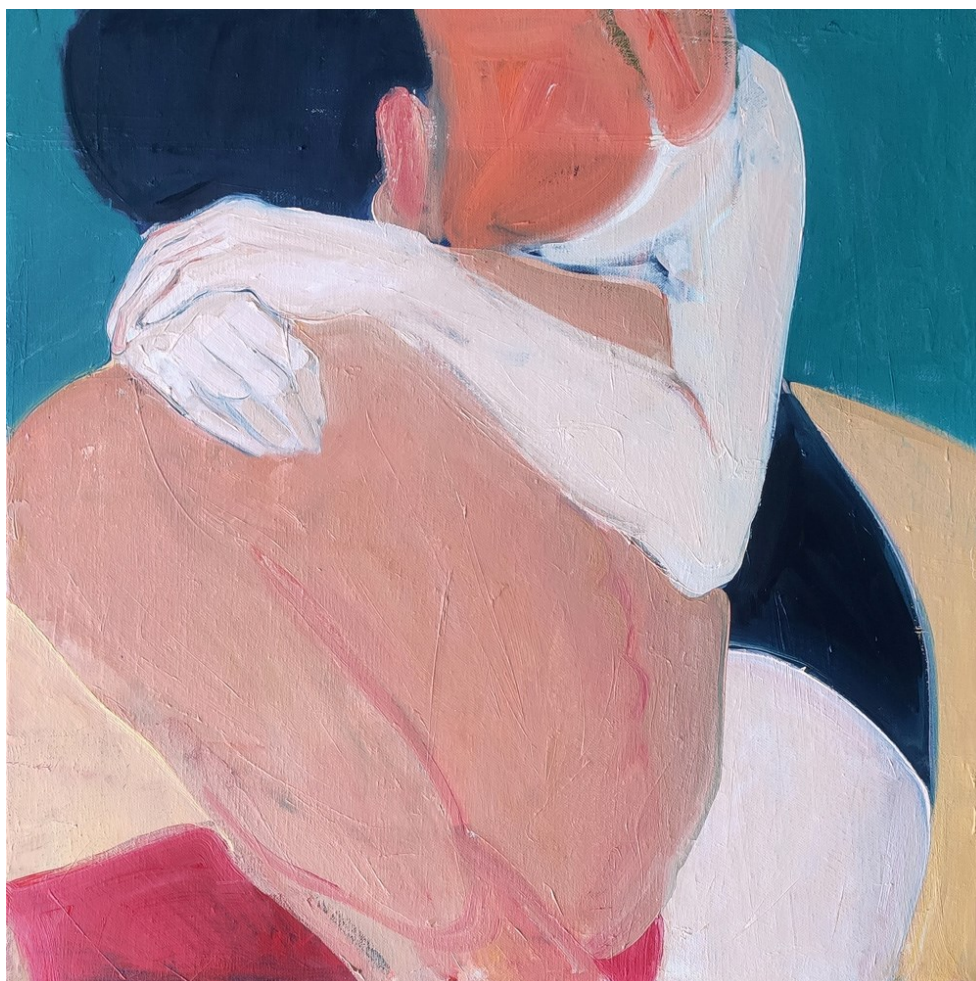
Summertime I

Oil on canvas

50cm x 50cm

Unframed

\$1300



MARIA KOSTAREVA

Summertime II

Oil on canvas

50cm x 50cm

Unframed

\$1800



MAYA BARNSTONE

Greenhouse Rendezvous

Acrylic on board

52cm x 52cm

Framed in raw oak

\$2200



MAYA BARNSTONE

Pool Rendezvous

Acrylic on board

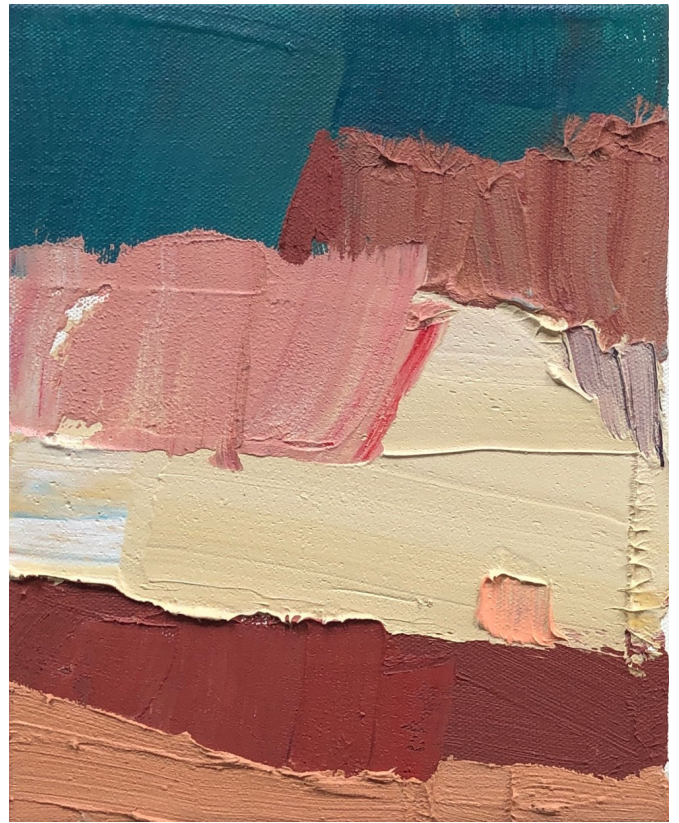
52cm x 52cm

Framed in raw oak

\$2200



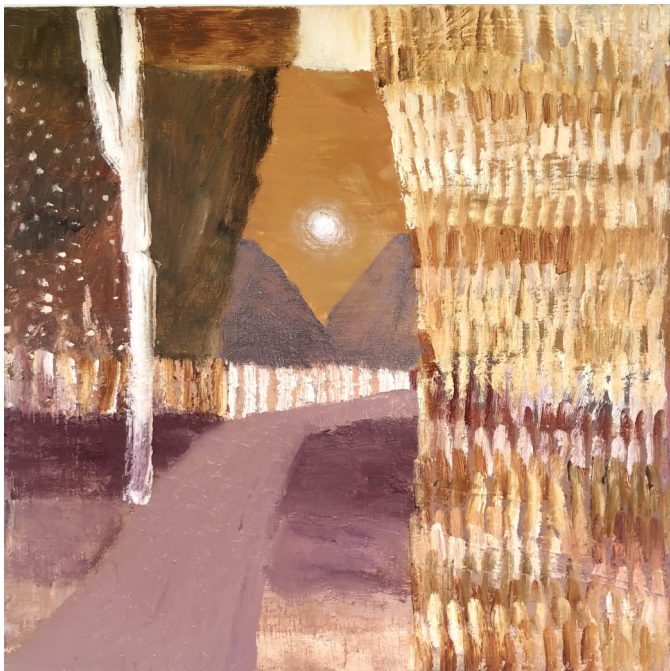
MELISSA BOUGHEY
Liminal Space (channel)
 Oil on canvas
 27cm x 22cm
 Framed in raw oak
 \$850



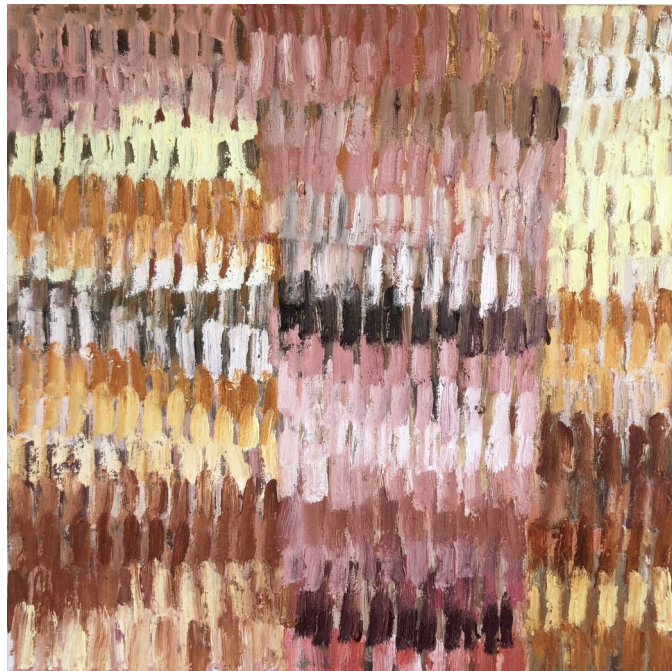
MELISSA BOUGHEY
Liminal Space (pink ochre)
 Oil on canvas
 27cm x 22cm
 Framed in raw oak
 \$850



MELISSA BOUGHEY
Liminal Space (water)
 Oil on canvas
 27cm x 32cm
 Framed in raw oak
 \$850



MIM FLUHRER
Walk With Me
 Oil on canvas
 50cm x 50cm
 Framed in raw oak
 \$850



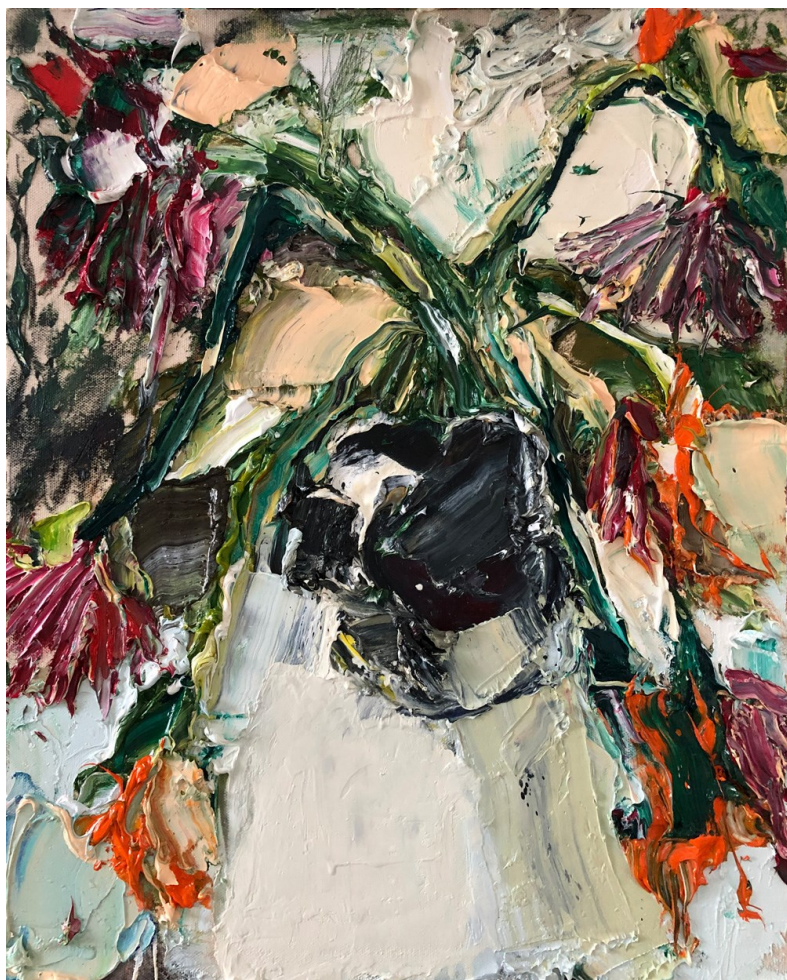
MIM FLUHRER
Gold Mine Grass II
 Oil on canvas
 50cm x 50cm
 Framed in raw oak
 \$850



MIM FLUHRER
Gold Mine Grass I
 Oil on canvas
 50cm x 50cm
 Framed in raw oak
 \$850



MIM FLUHRER
Hello Moon
 Oil on canvas
 50cm x 50cm
 Framed in raw oak
 \$850



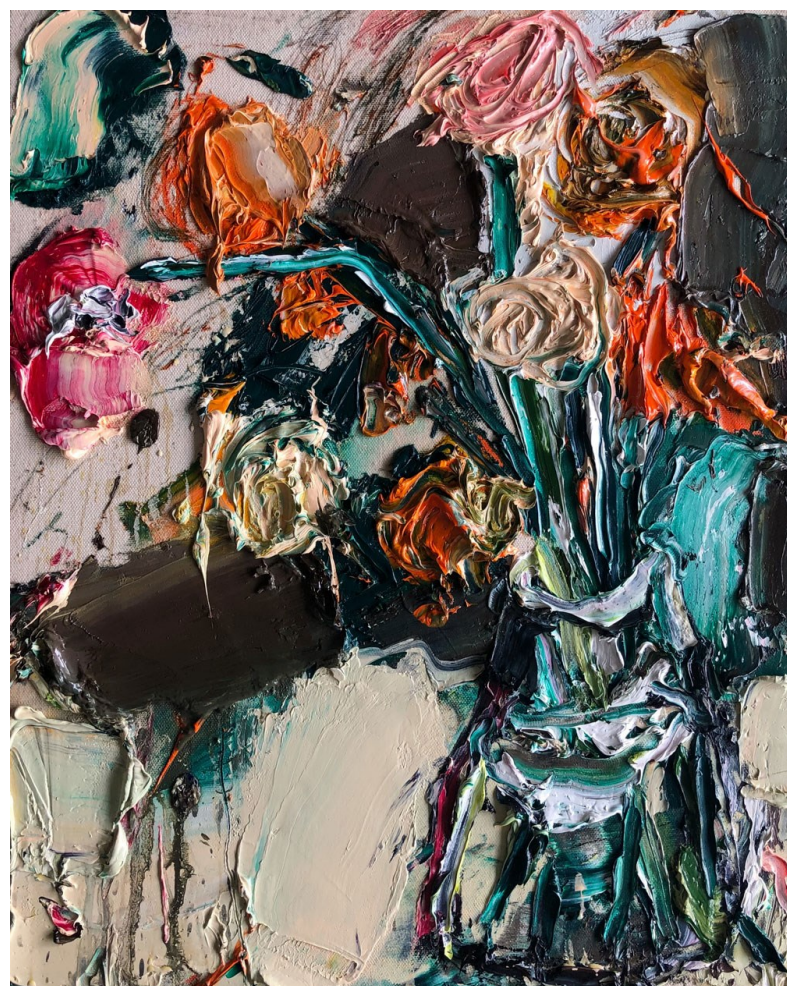
MITCHELL CHEESMAN

The Balance of an Approaching Scent Part III

Oil on canvas

50cm x 40cm

\$1250



MITCHELL CHEESMAN

The Balance of an Approaching Scent Part II

Oil on canvas

50cm x 40cm

\$1250



MORGAN STOKES

Sensitive Painting 1

Stainless steel + shou sugi ban finish

18cm x 16.5cm x 4cm

Framed in dark wood

\$550



MORGAN STOKES

Sensitive Painting 2

Stainless steel + shou sugi ban finish

18cm x 16.5cm x 4cm

Framed in dark wood

\$550



MORGAN STOKES

Stoic Painting

Stitched silk organza + polyester organza

22cm x 22cm x 5.5cm

Framed in stained Victorian ash

\$600



MORGAN STOKES

Unproblematic Painting

Stitched silk organza + polyester organza

22cm H x 22cm W x 5.5cm D

Framed in stained Victorian ash

\$600



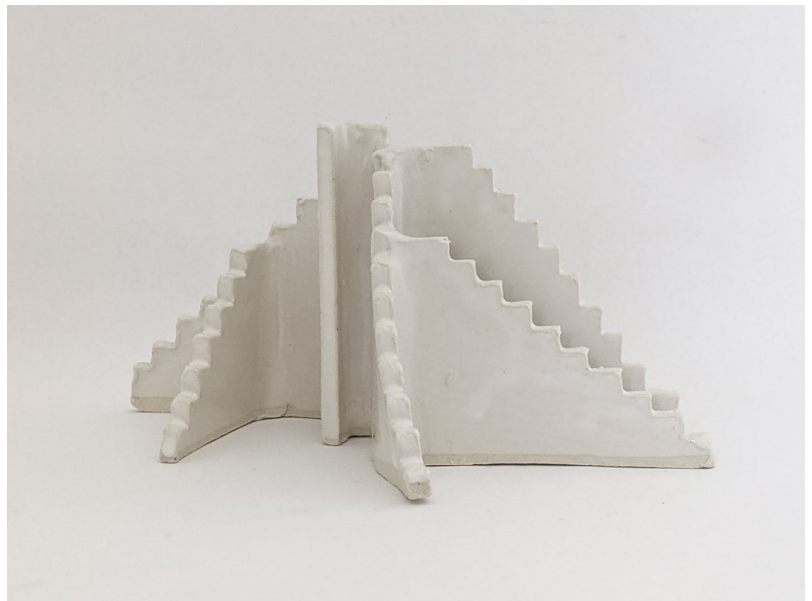
NATALIE ROSIN
Sandcastle Habitat III
 Unglazed white raku clay fired at 1260°
 25cm x 25cm x 26cm
 \$890



NATALIE ROSIN
Sandcastle Habitat II
 Unglazed white raku clay fired at 1260°
 25cm x 25cm x 26cm
 \$820



NATALIE ROSIN
Ascend
 White stoneware + white satin glaze
 17cm x 15cm x 12cm
 \$540



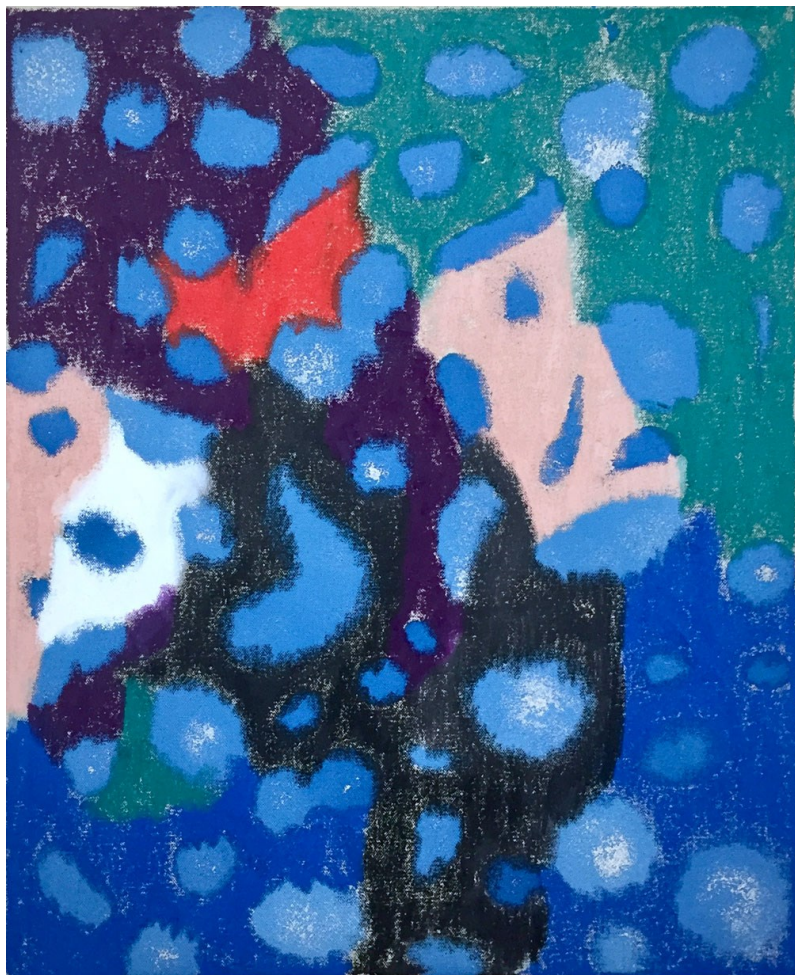
NATALIE ROSIN
Descend
 White stoneware + white satin glaze
 12cm x 24cm x 19cm
 \$490



NUNZIO MIANO
Farmer With the Golden Hat
 Acrylic on canvas
 61cm x 51cm
 Framed in dark wenge
 \$3600



NUNZIO MIANO
Man in Sorrow
 Acrylic on canvas
 46cm x 46cm
 Framed in dark wenge
 \$3000



STEFANO PEDRINI

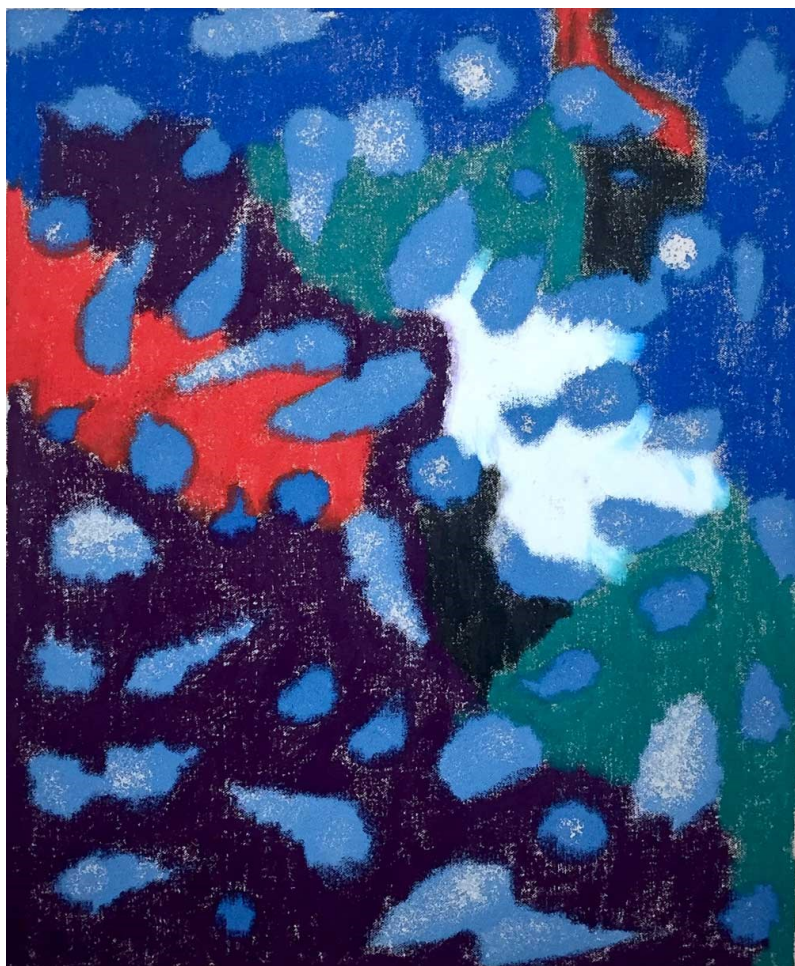
P.O.S.I (2) (Perception of secondary images 2)

Acrylic on canvas

50cm x 40cm

Unframed

\$1500



STEFANO PEDRINI

P.O.S.I (1) (Perception of secondary images 1)

Acrylic on canvas

50cm x 40cm

Unframed

\$1500



SUSAN CHEN

Grail I

3D printed porcelain + black stoneware

25cm x 25.5cm x 22cm

\$950



SUSAN CHEN

Grail II

3D printed porcelain + black stoneware

20.5cm x 19.5cm x 9.5cm

\$900



SUSIE DUREAU

Believer

Oil on linen

28cm x 23cm

Framed in raw oak

\$800



SUSIE DUREAU

Sky With Diamonds

Oil on linen

28cm x 23cm

Framed in raw oak

\$800



THERESA HUNT

Little Break

Oil on canvas

45cm x 45cm

Framed in dark espresso wood

\$2200



THERESA HUNT

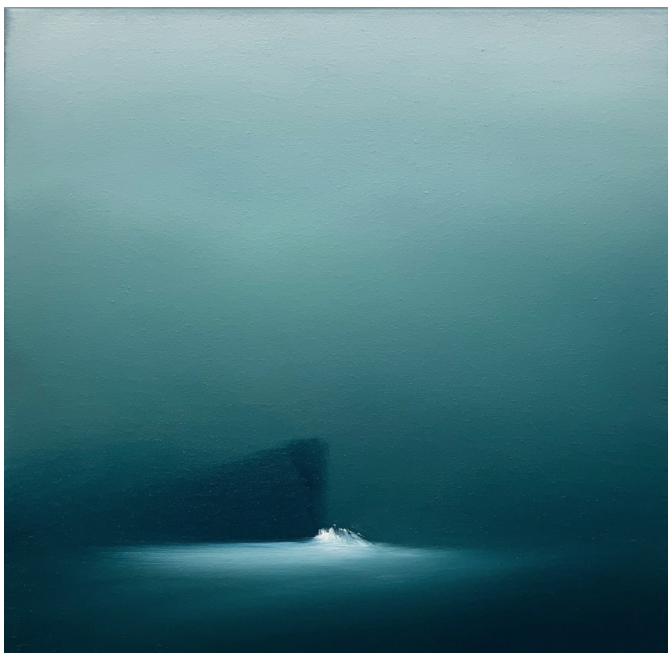
Moonlit Wave

Oil on canvas

45cm x 45cm

Framed in dark espresso wood

\$2200



THERESA HUNT

Quiet Dawn

Oil on canvas

45cm x 45cm

Framed in dark espresso wood

\$2200



THERESA HUNT

Calm Before the Storm

Oil on canvas

45cm x 45cm

Framed in dark espresso wood

\$2200



TRACEY LAMB

Dream Weaver

Welded steel

30.5cm x 14cm x 11cm

\$1800



TRACEY LAMB

Just So

Welded steel

35cm x 14cm x 13cm

\$1800



WENDY MATENGA
Virescent I
 Acrylic on hardwood
 30cm x 30cm
 Unframed
 \$650



WENDY MATENGA
Virescent II
 Acrylic on hardwood
 30cm x 30cm
 Unframed
 \$650



**Darlings 2021 was curated by Tash Yuncken.
A special thanks to our gallery artists + invited artists for bringing
their extraordinary talents to this celebratory show.**



CURATORIAL+CO.

ONLINE ART GALLERY + ART CONSULTANCY

ENQUIRIES TO SOPHIE VANDER, DIRECTOR
curatorialandco.com | hello@curatorialandco.com
 Studio 1, 175 Cleveland St Redfern NSW 2016
 +61 0400 477 484 | [@curatorialandco](https://www.instagram.com/curatorialandco)

**Curatorial+Co. acknowledges the Traditional Custodians of the country
on which the gallery stands, the Gadigal People of the Eora Nation,
and recognises their continuing connection to land, waters and cultures.
We pay our respects to their Elders past, present and emerging.**

Above image: Maya Barnstone | Cover image: Ileigh Hellier