

# SUSIE DUREAU

## FATHOMS

May 3-20, 2023



CURATORIAL+CO.



# SUSIE DUREAU

## FATHOMS

May 3-20, 2023

The word fathom has two meanings. One is a measurement, and the other is a reckoning. Both require an understanding of the shape of the world around us. Chiefly used to measure the depth of water, a fathom derives from the Old English word meaning outstretched arms and measures the approximate space from fingertip to fingertip across the heart space of an adult human. The second meaning of fathom is to understand a complex idea.

The word fathom offers insight into the human condition. In its dual meaning, fathom proposes a complex weaving of anatomies and minds, humans and landscape together. The idea replaces the binary concepts of mind over body and human over nature, as Western thinkers have previously suggested.

The coastal landscape (the environment my body is intricately connected to) offers a compelling sensory field for me to explore my being—this is why I am drawn to it.

My painting practice engages a method of cultivated curiosity: slowing down and attuning my senses to the landscape, thereby accessing embodied knowledge that arises from thinking and feeling in unison.

Nature speaks to me in nonverbal languages of light, colour, texture, temperature and tone; these are also the languages of painting. Painting is a collaboration between the sensory body, the mind and emotion, the material pigments and ground. Through the artworks in this exhibition, I borrow these languages to fathom a bond between myself and the landscape: a bond that is both commonplace and mystifying.

~ Susie Dureau, May 2023



*Uncharted Directions*  
Oil on polycotton  
133cm x 164cm  
Framed in Tasmanian oak  
\$7000



*The Mariner*  
Oil on linen  
101cm x 122cm  
Framed in Tasmanian oak  
\$4800





*The Long View*  
Oil on cotton  
138cm x 152cm  
Framed in Tasmanian oak  
\$7000



*The Dance that Made the World*  
Oil on linen  
138cm x 152cm  
Framed in Tasmanian oak  
\$7000





*Quiet Revolutionary*  
Oil on cotton  
138cm x 152cm  
Framed in Tasmanian oak  
\$7000



*Fathoms*  
Oil + acrylic on cotton  
152cm x 244cm  
Framed in Tasmanian oak  
\$12,500





*Non Verbal Stories*  
Oil on linen  
101cm x 122cm  
Framed in Tasmanian oak  
\$4800



*My Breath is Like the Tide*  
Oil on linen  
138cm x 152cm  
Framed in Tasmanian oak  
\$7000





*Messages of Consequence*  
Oil on cotton  
138cm x 152cm  
Framed in Tasmanian oak  
\$7000



*Biology of Memory*  
Oil + acrylic on cotton  
152cm x 244cm  
Framed in Tasmanian oak  
\$12,500





*Living in Place*  
Oil on linen  
138cm x 152cm  
Framed in Tasmanian oak  
\$7000

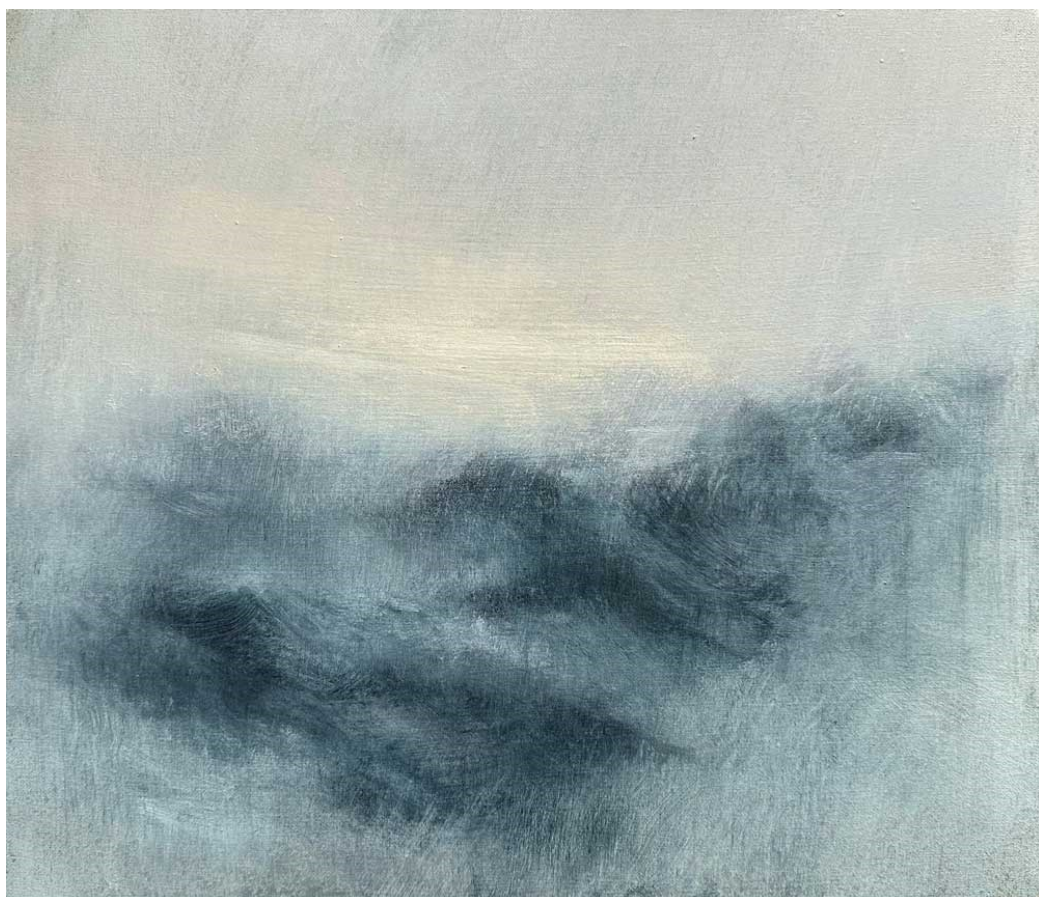


*As it Was in the Beginning*  
Oil + acrylic on cotton  
152cm x 244cm  
Framed in Tasmanian oak  
\$12,500





*Shimmering Sequence*  
Oil on polycotton  
31cm x 36cm  
Framed in Tasmanian oak  
\$1200



*April Dawn*  
Oil on polycotton  
31cm x 36cm  
Framed in Tasmanian oak  
\$1200





*Days Like This*  
Oil on polycotton  
31cm x 36cm  
Framed in Tasmanian oak  
\$1200



*Everything Looks Beautiful to Me*  
Oil on polycotton  
31cm x 36cm  
Framed in Tasmanian oak  
\$1200





*Embodied*  
Oil on cotton  
138cm x 152cm  
Framed in Tasmanian oak  
\$7000



*Emissary of Light*  
Oil on linen  
101cm x 122cm  
Framed in Tasmanian oak  
\$4800





*We Can Live and We Will*  
Oil on polycotton  
31cm x 36cm  
Framed in Tasmanian oak  
\$1200



*Whale Country*  
Oil on polycotton  
31cm x 36cm  
Framed in Tasmanian oak  
\$1200





*Homing Instinct*  
 Oil on polycotton  
 31cm x 36cm  
 Framed in Tasmanian oak  
 \$1200



*Honey Cinnamon Sea*  
 Oil on polycotton  
 31cm x 36cm  
 Framed in Tasmanian oak  
 \$1200





*Beginnings*  
Oil on linen  
101cm x 122cm  
Framed in Tasmanian oak  
\$4800



*Ever Will Be*  
Oil on linen  
138cm x 152cm  
Framed in Tasmanian oak  
\$7000





*A Perfect Day*  
 Oil on polycotton  
 31cm x 36cm  
 Framed in Tasmanian oak  
 \$1200



*Awakening*  
 Oil on polycotton  
 31cm x 36cm  
 Framed in Tasmanian oak  
 \$1200



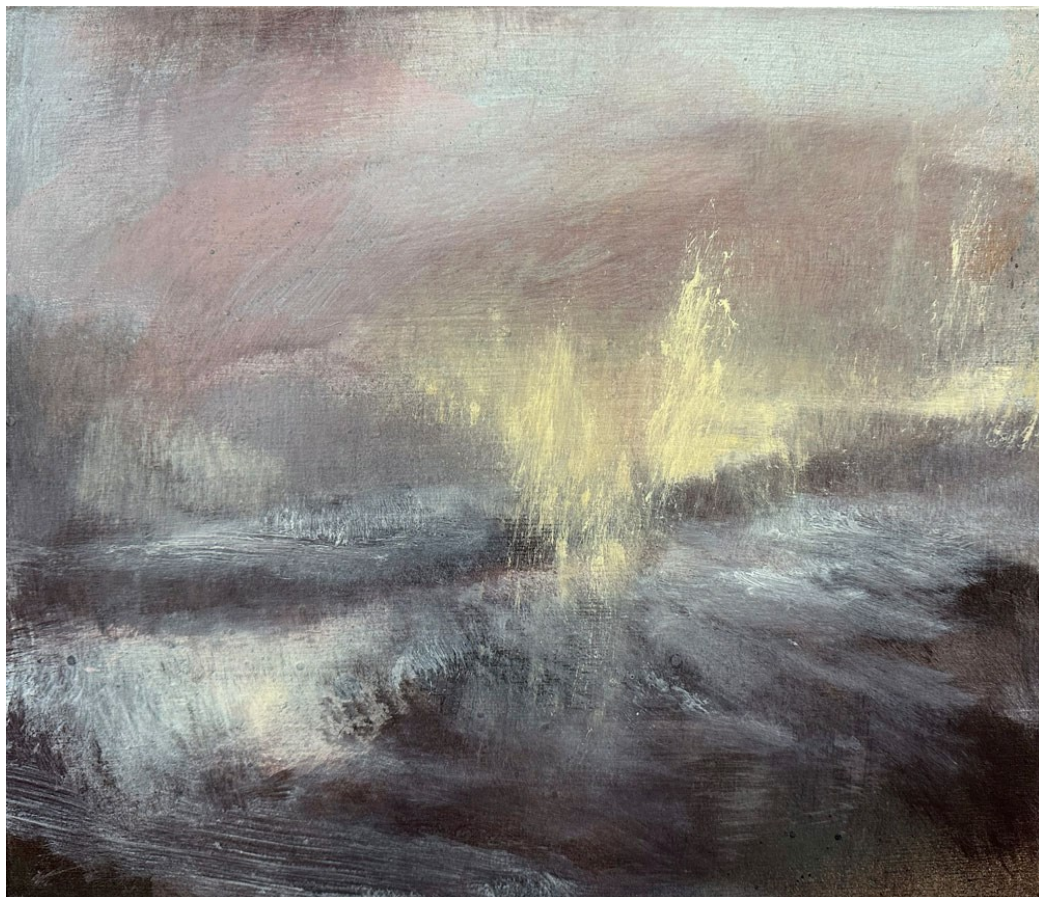


*Remember in Every Cell  
of Your Being*  
Oil on polycotton  
31cm x 36cm  
Framed in Tasmanian oak  
\$1200

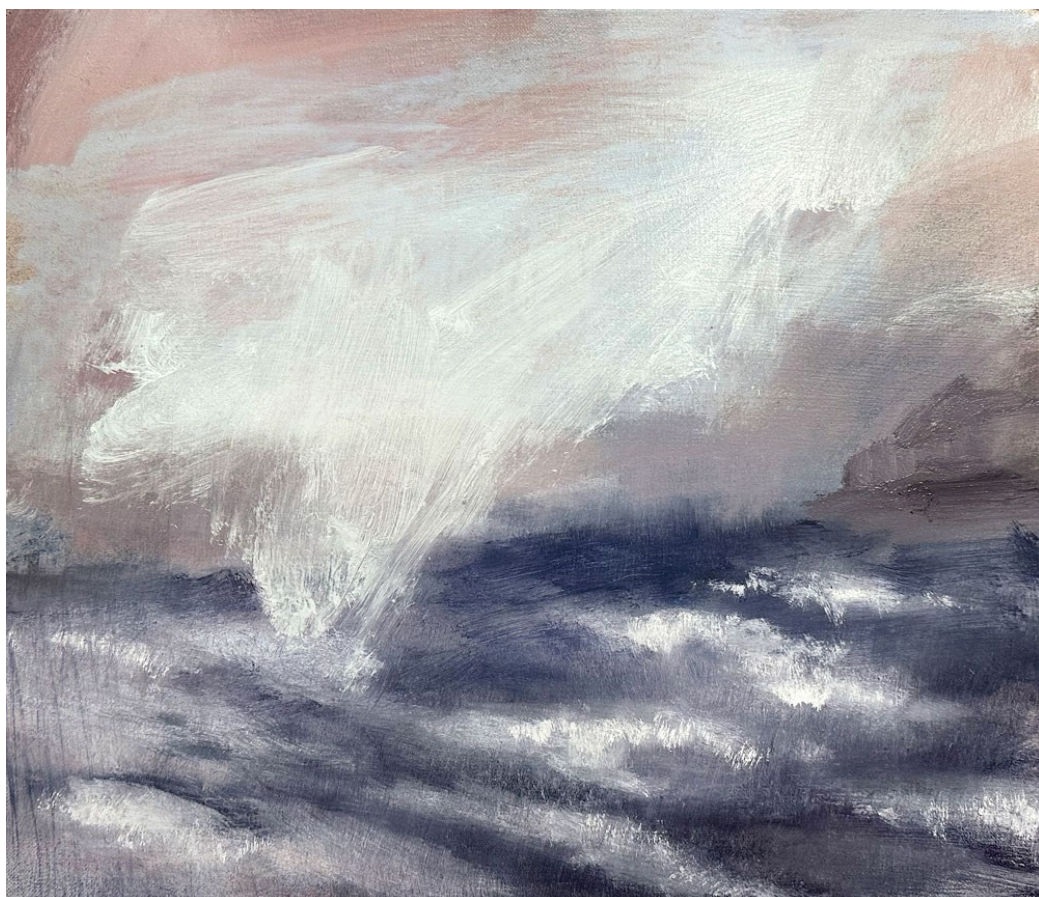


*The Edge of the Foggy Coast*  
Oil on polycotton  
31cm x 36cm  
Framed in Tasmanian oak  
\$1200





*World Without End*  
Oil on polycotton  
31cm x 36cm  
Framed in Tasmanian oak  
\$1200



*Vagus Tide*  
Oil on polycotton  
31cm x 36cm  
Framed in Tasmanian oak  
\$1200





**CURATORIAL+CO.**

**ART GALLERY + ART CONSULTANCY**

ENQUIRIES TO SOPHIE VANDER, DIRECTOR  
[curatorialandco.com](http://curatorialandco.com) | [hello@curatorialandco.com](mailto:hello@curatorialandco.com)

80 William St, Woolloomooloo NSW 2011

+61 2 9318 1728 | [@curatorialandco](https://www.instagram.com/curatorialandco)

Curatorial+Co. acknowledges the Traditional Custodians of the country on which the gallery stands, the Gadigal People of the Eora Nation, and recognises their continuing connection to land, waters and cultures. We pay our respects to their Elders past, present and emerging.