



# MIM FLUHRER

19-29 July 2023

IN ESSENCE: HONEY MILK & THE NIGHT MOTH



CURATORIAL+CO.

# MIM FLUHRER

## IN ESSENCE: HONEY MILK & THE NIGHT MOTH

*In Essence: Honey Milk & The Night Moth* is Mim Fluhrer's debut exhibition with Curatorial+Co. Fluhrer presents a collection of vibrant oil paintings which encapsulate the cherished and unseen moments that take place amongst the hustle and bustle of our lives.

Each artwork begins with a little nudge from nature: the sound of the butcher bird on the windowsill, the royal display of the burgundy amaranth flower as it sprouts in every vegetable bed and beyond. Also emanating our mode of humanness, Fluhrer draws from the prevailing patterns of human behaviour and experience: a sleeping child, the pain of a saddened heart, a connection to an ancestor deep in our past. Once pigment breaks the surface of the canvas, a spontaneous dance unfolds between brush and paint and an invitation is extended. An invitation to pause and connect with the silent contentment of those precious hidden moments.

*A woman wakes before the sun.*

*Her little cub bringing her into the new day with magic of life in every giggle.*

*She makes her coffee, a daily ritual of presence and satisfaction.*

*Bird song and a flamed filled sky awakens with the rest of the world.*

*A drive to the emerald river, the mountains sound their voice of protection.*

*A single white cloud bobs in the blue, blue sky.*

*It is only 9am and there are already summons for a score of paintings.*

*Mim Fluhrer, July 2023*



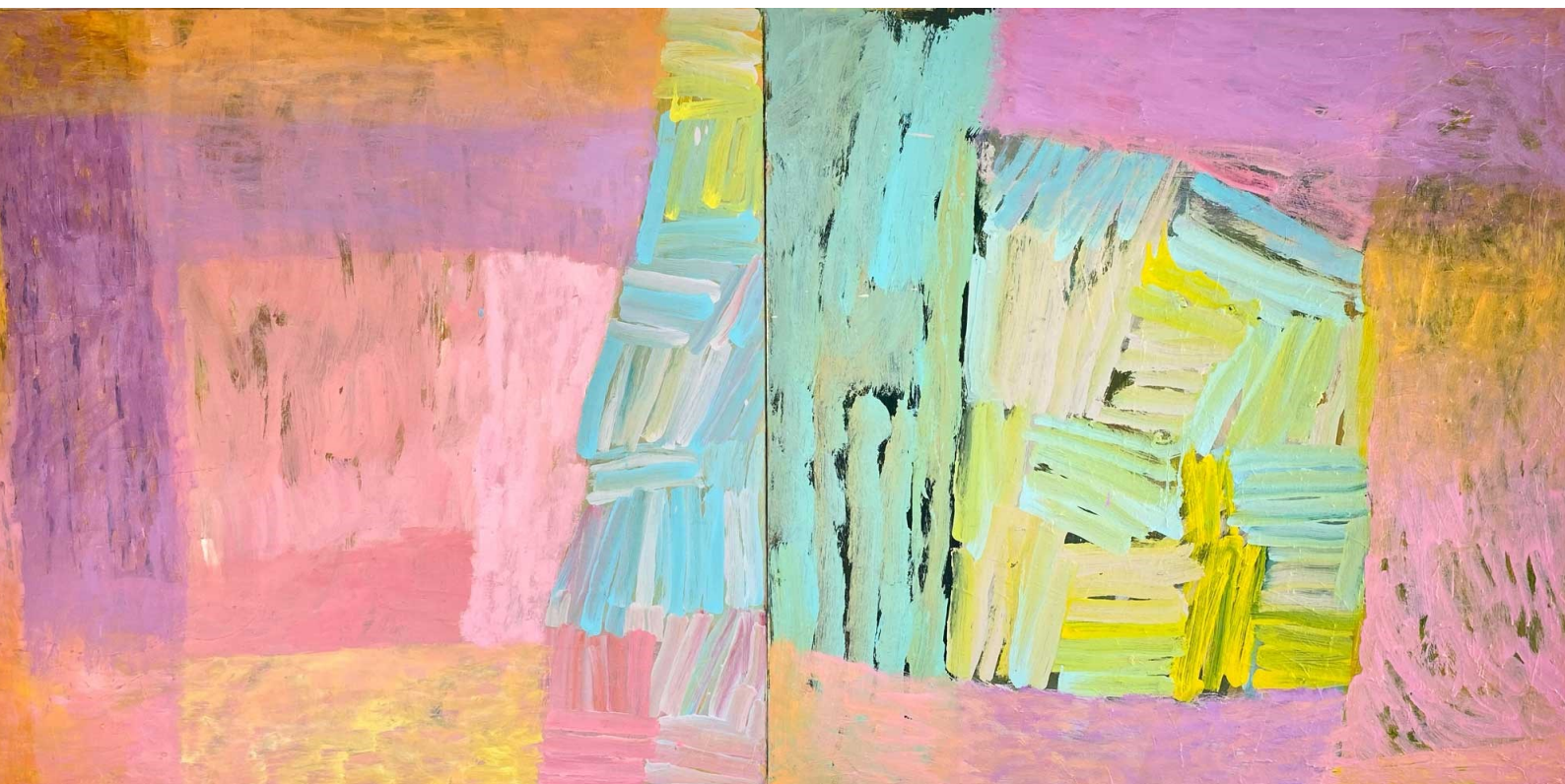






*Home of the Night Moth*  
Oil on canvas  
135cm x 124.5cm  
Framed in Tasmanian oak  
\$3900





*I Love You For Infinity*  
101cm x 202cm  
Oil on canvas  
Framed in Tasmanian oak  
\$5600





*Honey Milk*  
Oil on canvas  
135cm x 124.5cm  
Framed in Tasmanian oak  
\$3900





*Hold Me and My Tender Heart*  
Oil on canvas  
135cm x 124.5cm  
Framed in Tasmanian oak  
\$3900





*First Star*  
Oil on canvas  
135cm x 124.5cm  
Framed in Tasmanian oak  
\$3900





*Riverbend*  
Oil on canvas  
124.5cm x 135cm  
Framed in Tasmanian oak  
\$3900









*Mana*  
Oil on canvas  
104cm x 84cm  
Framed in Tasmanian oak  
\$2800





*Spirit*  
Oil on canvas  
135cm x 124.5cm  
Framed in Tasmanian oak  
\$3900



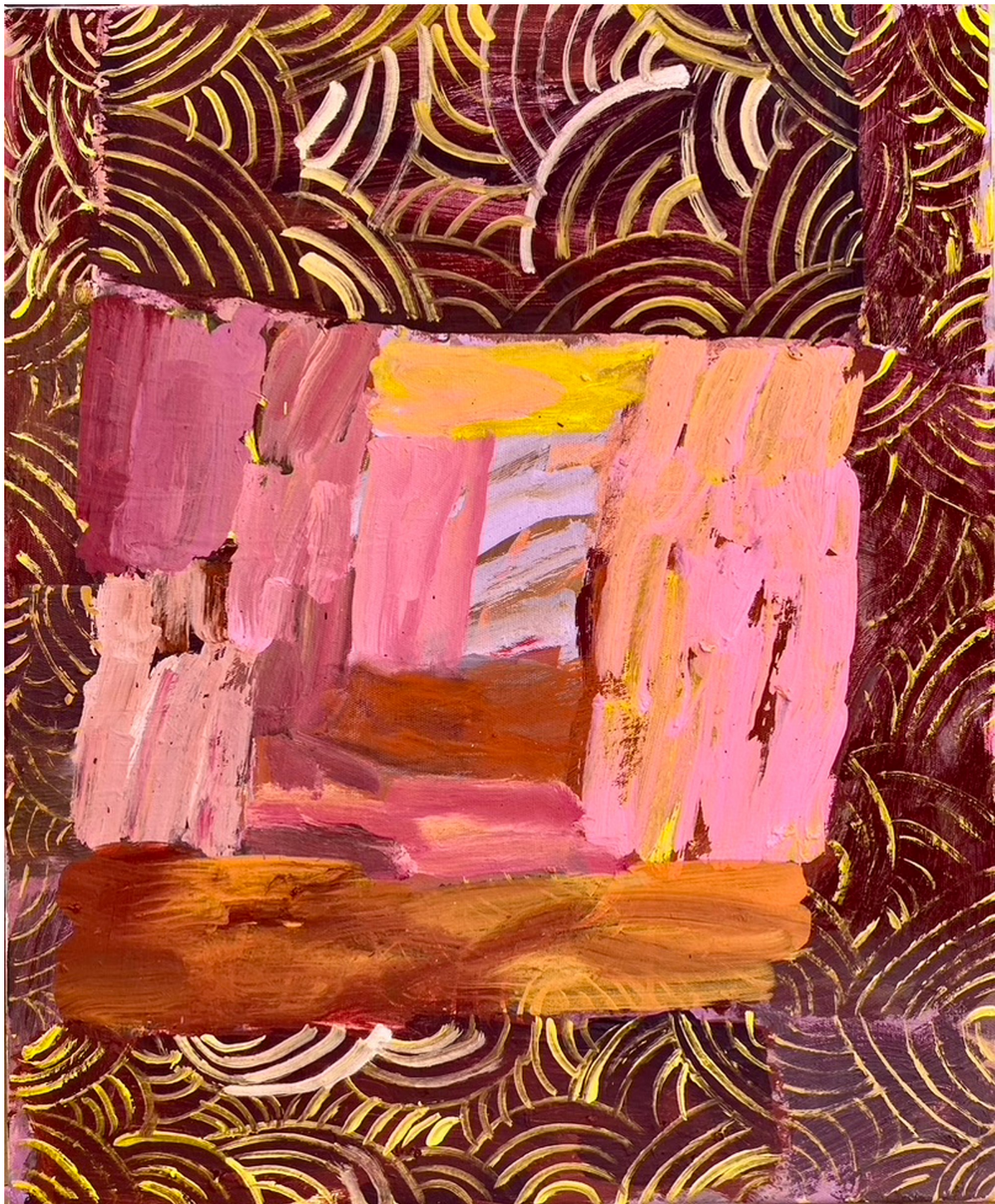


*River Run*  
Oil on canvas  
135cm x 124.5cm  
Framed in Tasmanian oak  
\$3900



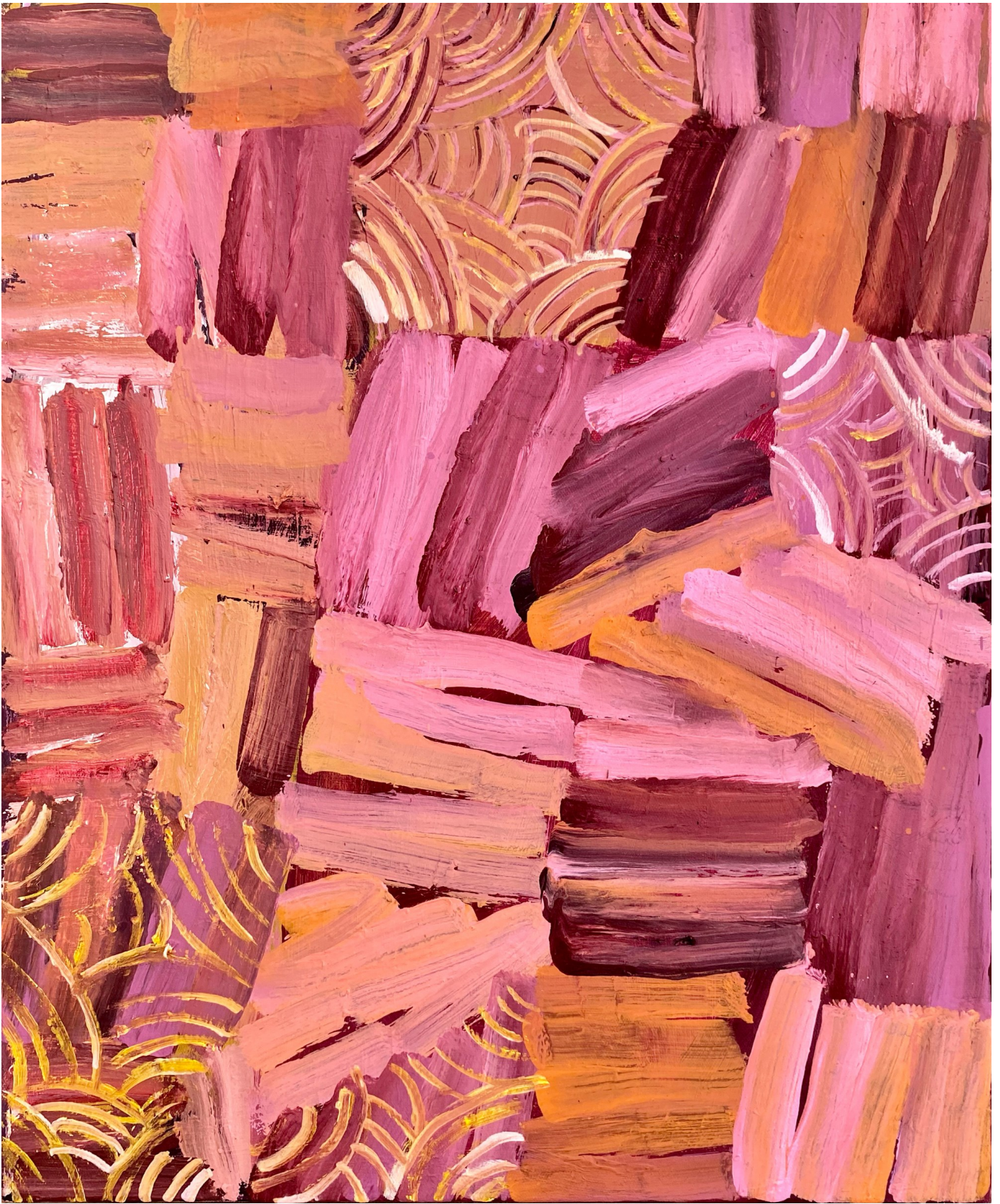






*Held*  
Oil on canvas  
64cm x 53cm  
Framed in Tasmanian oak  
\$1900





*Family Weave*  
Oil on canvas  
64cm x 53cm  
Framed in Tasmanian oak  
\$1900





*The Unveiling*  
Oil on canvas  
135cm x 124.5cm  
Framed in Tasmanian oak  
\$3900





*Web*  
Oil on canvas  
135cm x 124.5cm  
Framed in Tasmanian oak  
\$3900





CURATORIAL+CO.

ART GALLERY + ART CONSULTANCY

ENQUIRIES TO SOPHIE VANDER, DIRECTOR  
[curatorialandco.com](http://curatorialandco.com) | [hello@curatorialandco.com](mailto:hello@curatorialandco.com)

80 William St, Woolloomooloo NSW 2011

+61 2 9318 1728 | [@curatorialandco](https://www.instagram.com/curatorialandco)

Curatorial+Co. acknowledges the Traditional Custodians of the country on which the gallery stands, the Gadigal People of the Eora Nation, and recognises their continuing connection to land, waters and cultures. We pay our respects to their Elders past, present and emerging.