

# LIGHTHOUSE



CURATORIAL+CO.

21 MAY - 7 JUN 2025

**BELINDA STREET**

*The lighthouse itself stands as both metaphor and muse  
—symbolising guidance, solitude, and constancy in the face of change.  
Street paints not only the physical presence of the lighthouse, but the  
feeling of being within its aura: the salt-laden wind,  
the stark light, the ever-present hum of the harbour.*



## BELINDA STREET



Belinda Street is an Australian artist whose practice explores the dynamic intersection between abstraction and landscape, forging a deeply personal and emotive connection to place. Her large-scale canvases are defined by expressive gestures, intuitive colour, and layered compositions that evoke movement, memory, and the passage of time. Influenced by Abstract Expressionism, Street grounds emotion in the physical world, using painting as a way to bridge internal experience with external reality. Through her instinctual, immersive approach, she rejects rigid representation in favour of a more fluid, human expression—asserting the enduring power of painting as a form of resistance, reflection, and connection.

Street is the 2019 winner of the Paddington Art Prize, twice winner of the Mosman Youth Art Prize, and has been a finalist in the 2025 Hadley's Art Prize, the Gosford Art Prize, Calleen Art Prize, Muswellbrook Art Prize, Adelaide Perry Drawing Prize, Fleurieu Food & Wine Art Prize, Warringah Art Prize and the MAP Portrait Prize. The artist has been awarded a full scholarship to the Julian Ashton Art School, and has attained a degree in Visual Arts at The University of Newcastle, with Honours at The College of Fine Arts (UNSW).

Curatorial+Co. acknowledges the Traditional Custodians of the country on which the gallery stands, the Gadigal People of the Eora Nation, and recognises their continuing connection to land, waters and cultures. We pay our respects to their Elders past and present.

# LIGHTHOUSE

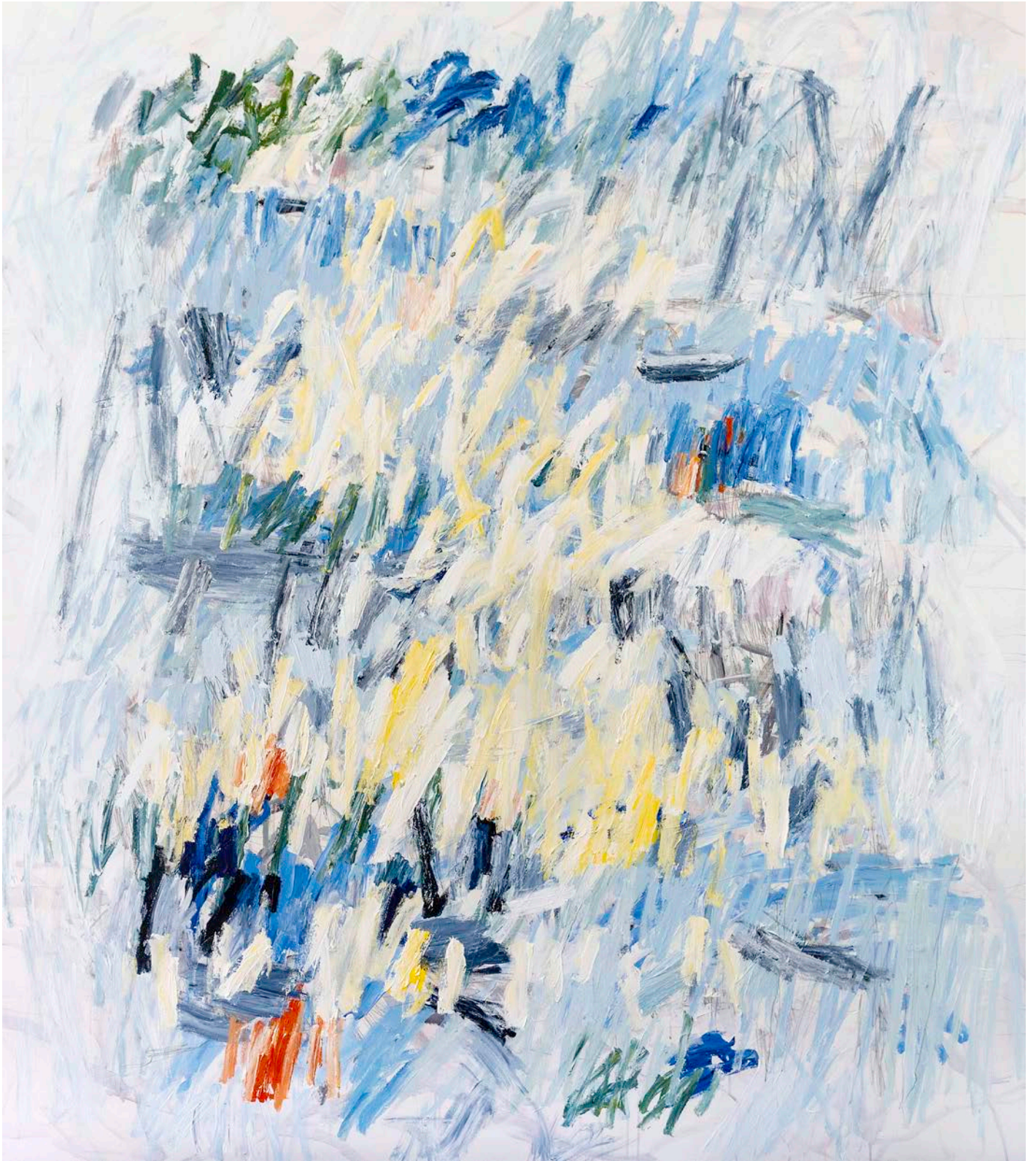
Belinda Street's latest series of abstract paintings emerged from her 2023 artist residency at Nobby's Whibayganba Lighthouse in Newcastle, Australia. From the studio, Street was greeted by the vistas of the ocean, beach and harbour of which she documented moments of raw energy from one of Australia's busiest ports. The harbour, alive with the same vivacious energy as the brushstrokes in Street's paintings, was teeming with colossal cargo ships, tugboats, ferries, recreational vessels, and the hum of industry all flow in and out, creating an unrelenting rhythm. This energy, both human and mechanical, collides with the wild, elemental force of the coastline and became the main inspiration behind this body of work.

Whilst also referring to its physical presence, the title, *Lighthouse*, serves as a metaphor for guidance, solitude, and constancy in the face of change. Street embeds these qualities into her paintings, capturing the empirical essence of the Lighthouse's aura. It becomes a symbol of contrasting dualities - light and dark, isolation and connection, certainty and mystery. Her painting practice emulates this tension by oscillating between moments of control and surrender, echoing the forces of nature she responds to.

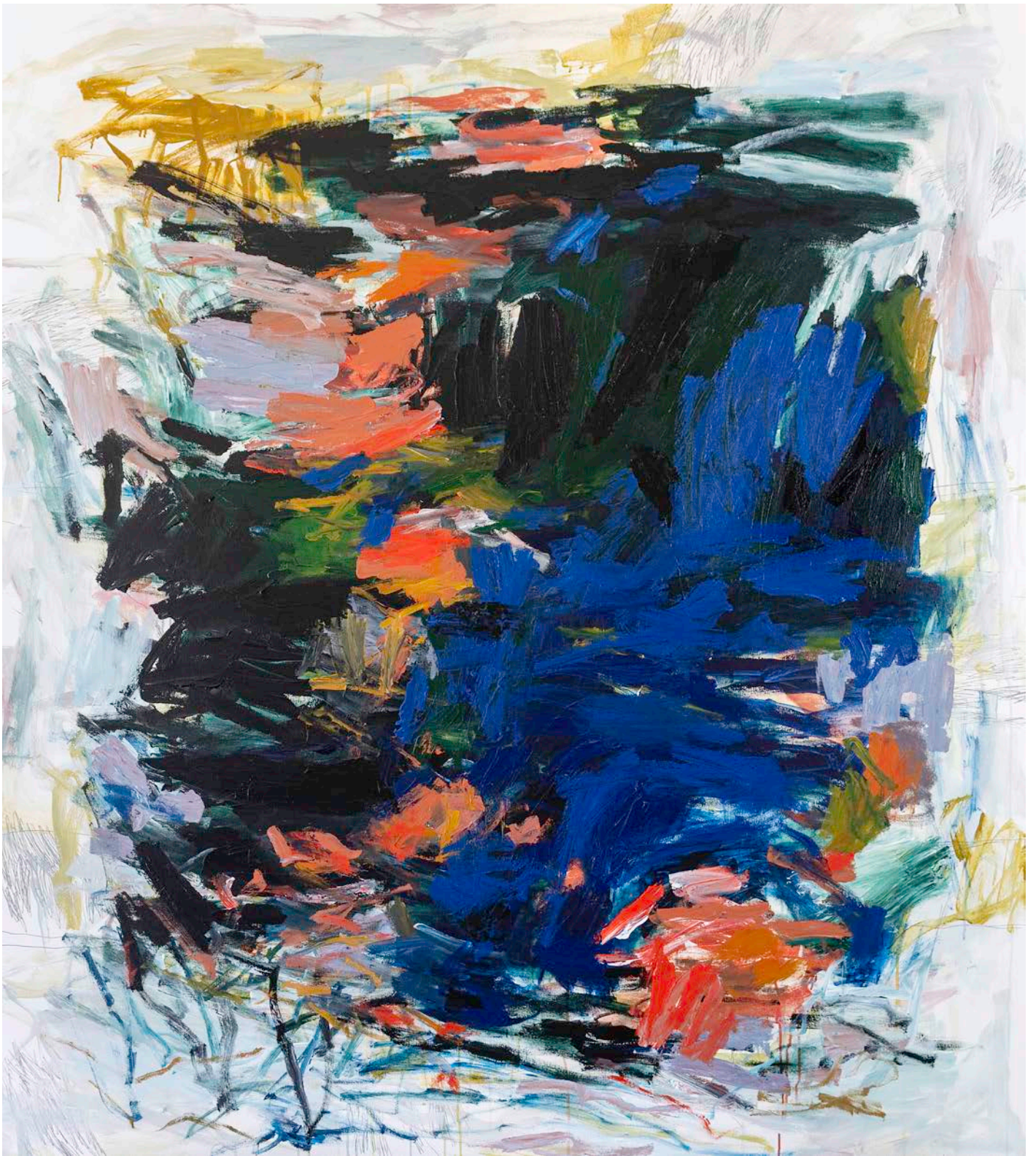
Frenetic and intuitive brush strokes are layered over meditative linear gestures mirroring tides, movement, and time. Each painting becomes a kind of weather system; fluid, layered, alive, offering viewers a space to navigate rather than a scene to observe. Her instinctual marks are complemented by an intuitive use of vibrant color which reflects elements of the harbour; red and black coal ships, the white and green of the lighthouse, the navy-blue tugboats, the orange navigation signs, the grey and yellow of industry, alongside the colours of the natural environment.

Influenced by the American Abstract Expressionists, Street extends this legacy by anchoring emotion in place. Where these artists of the last century turned inward, she bridges the internal with the external, merging the psychological landscape with the physical terrain of Newcastle's coastline. In this context, Street's work stands as a testament to the irreplaceable intimacy of the human hand, the felt experience of the artist, and the irrefutable power of the natural world.

The act of abstract painting becomes a defiant rebellion against rigid representation and a reclamation of painting as a deeply human, emotional practice - a revolt against the digital age of overwhelming noise, AI and misinformation. Abstraction, for Street, offers something truly unique - an artistic interpretation of the artist's own experience.



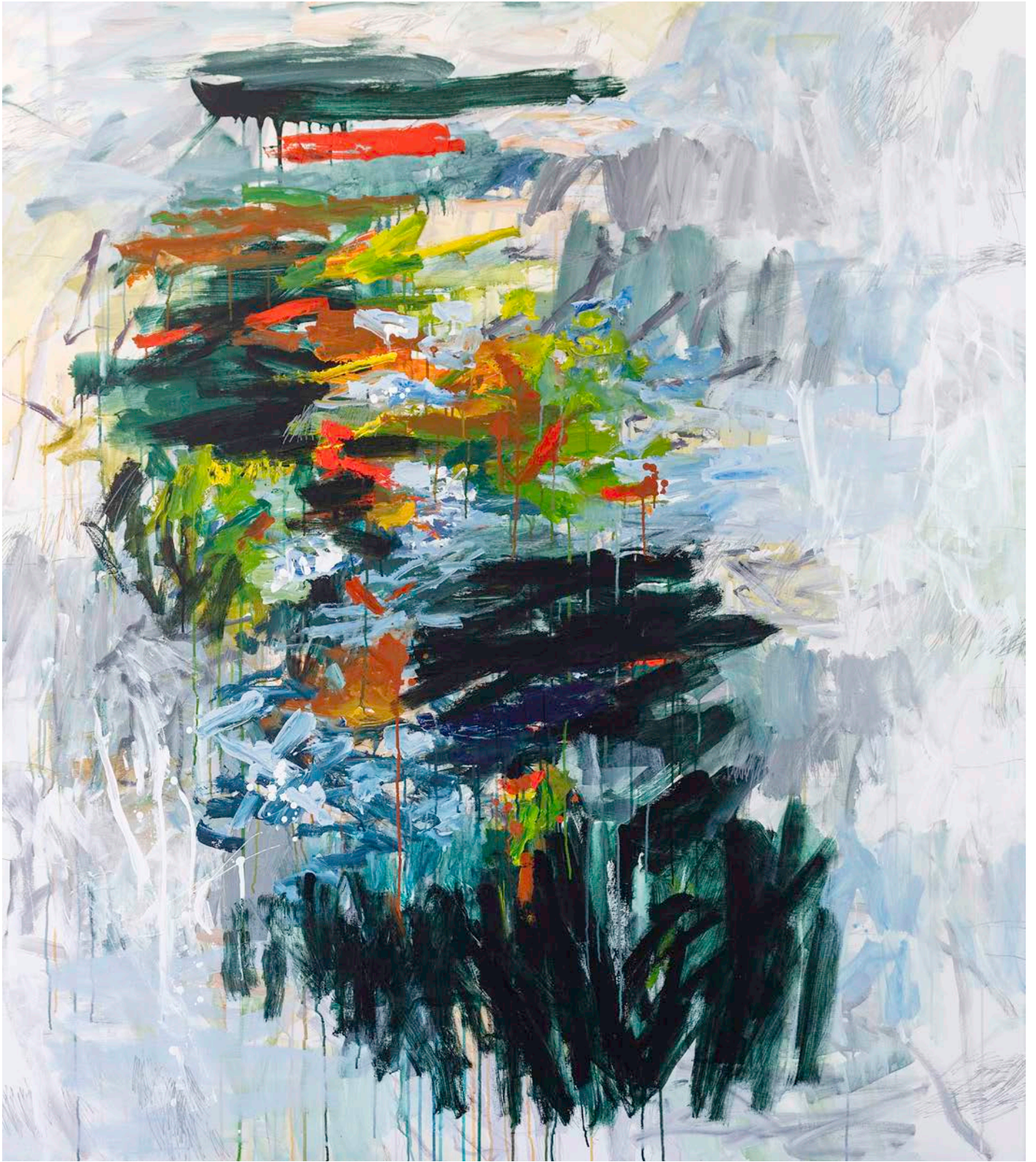
*The Day Awakens, 2025*  
Acrylic on canvas  
173 x 153 cm  
Framed in Tasmanian oak  
AUD 7,900



*Voice of the Harbour, 2025*  
Acrylic on canvas  
173 x 153 cm  
Framed in Tasmanian oak  
AUD 7,900



*Harbours Rhythm, 2025*  
Acrylic on canvas  
173 x 153 cm  
Framed in Tasmanian oak  
AUD 7,900



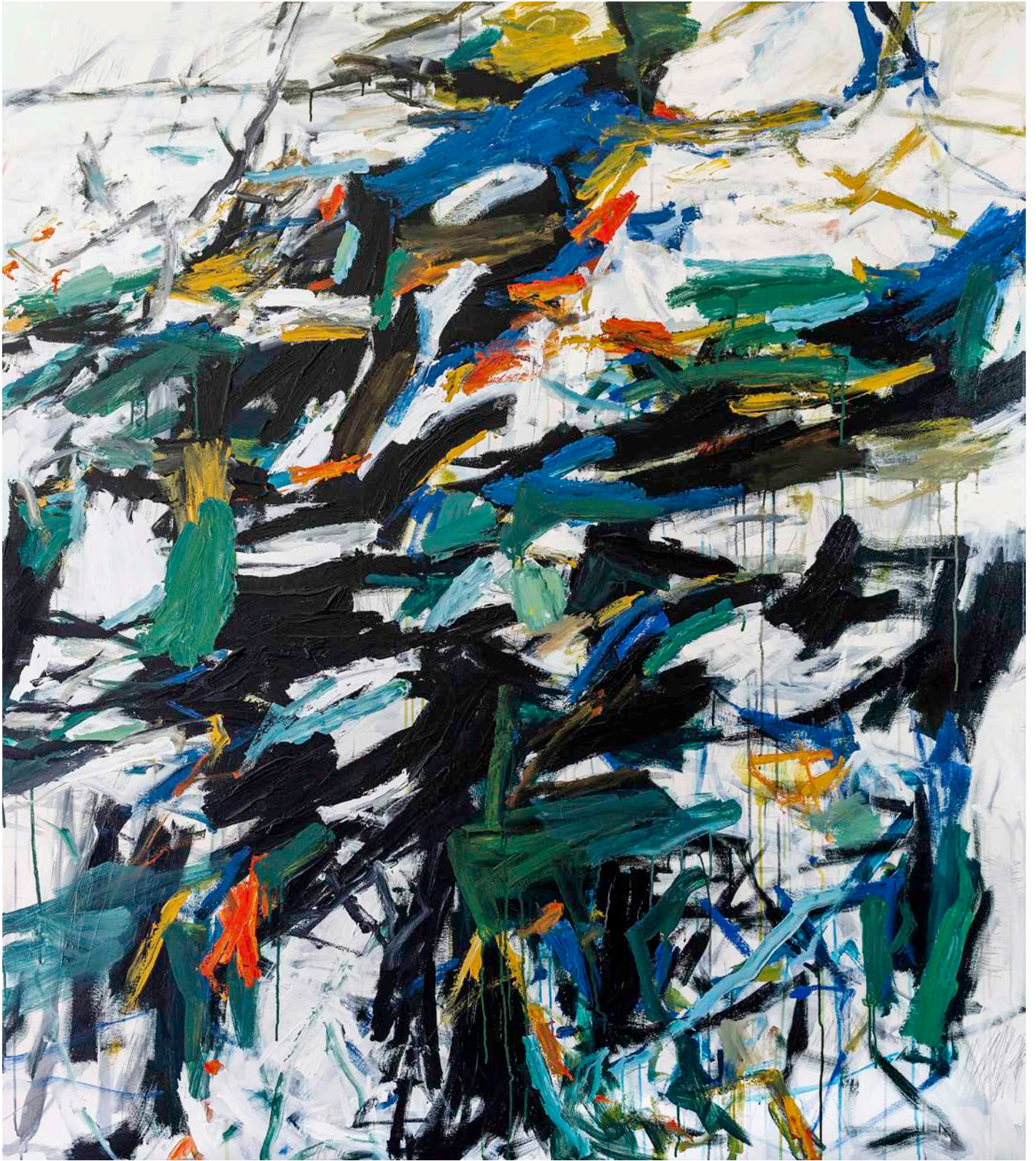
*Lead Me to the Harbour, 2025*  
Acrylic on canvas  
173 x 153 cm  
Framed in Tasmanian oak  
AUD 7,900



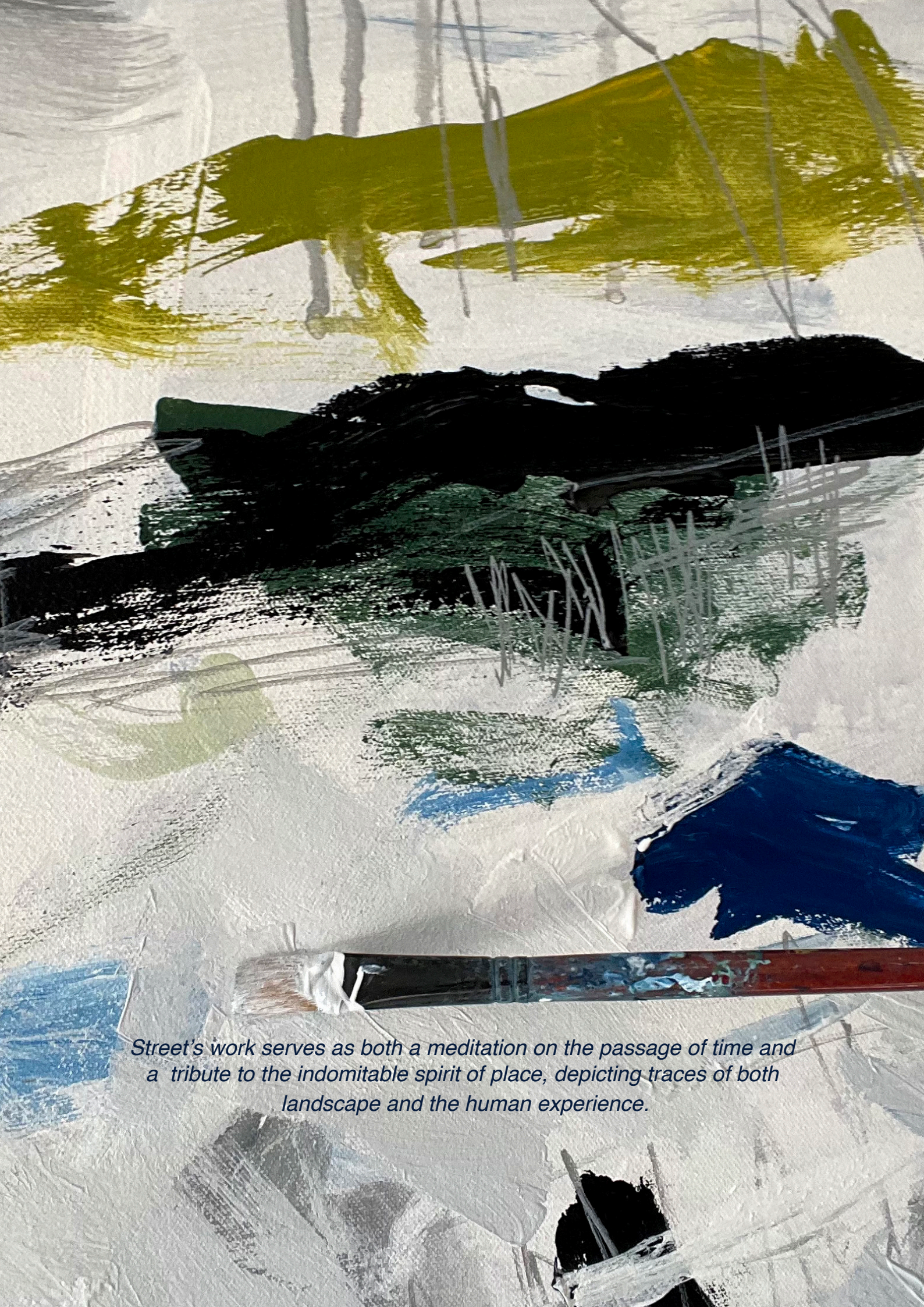
*Gentle Sway, 2025*  
Acrylic on canvas  
173 x 153 cm  
Framed in Tasmanian oak  
AUD 7,900



*Let the Winds Howl, 2025*  
Acrylic on canvas  
173 x 153 cm  
Framed in Tasmanian oak  
AUD 7,900



*Ships in the Night II, 2025*  
Acrylic on canvas  
173 x 153 cm  
Framed in Tasmanian oak  
AUD 7,900



*Street's work serves as both a meditation on the passage of time and a tribute to the indomitable spirit of place, depicting traces of both landscape and the human experience.*



*Winds Carry Whispers of Dreams Yet Untold, 2025*  
Acrylic on canvas  
173 x 153 cm  
Framed in Tasmanian oak  
AUD 7,900



*The Sea Is Mad My Love, 2025*  
Acrylic on canvas  
173 x 153 cm  
Framed in Tasmanian oak  
AUD 7,900

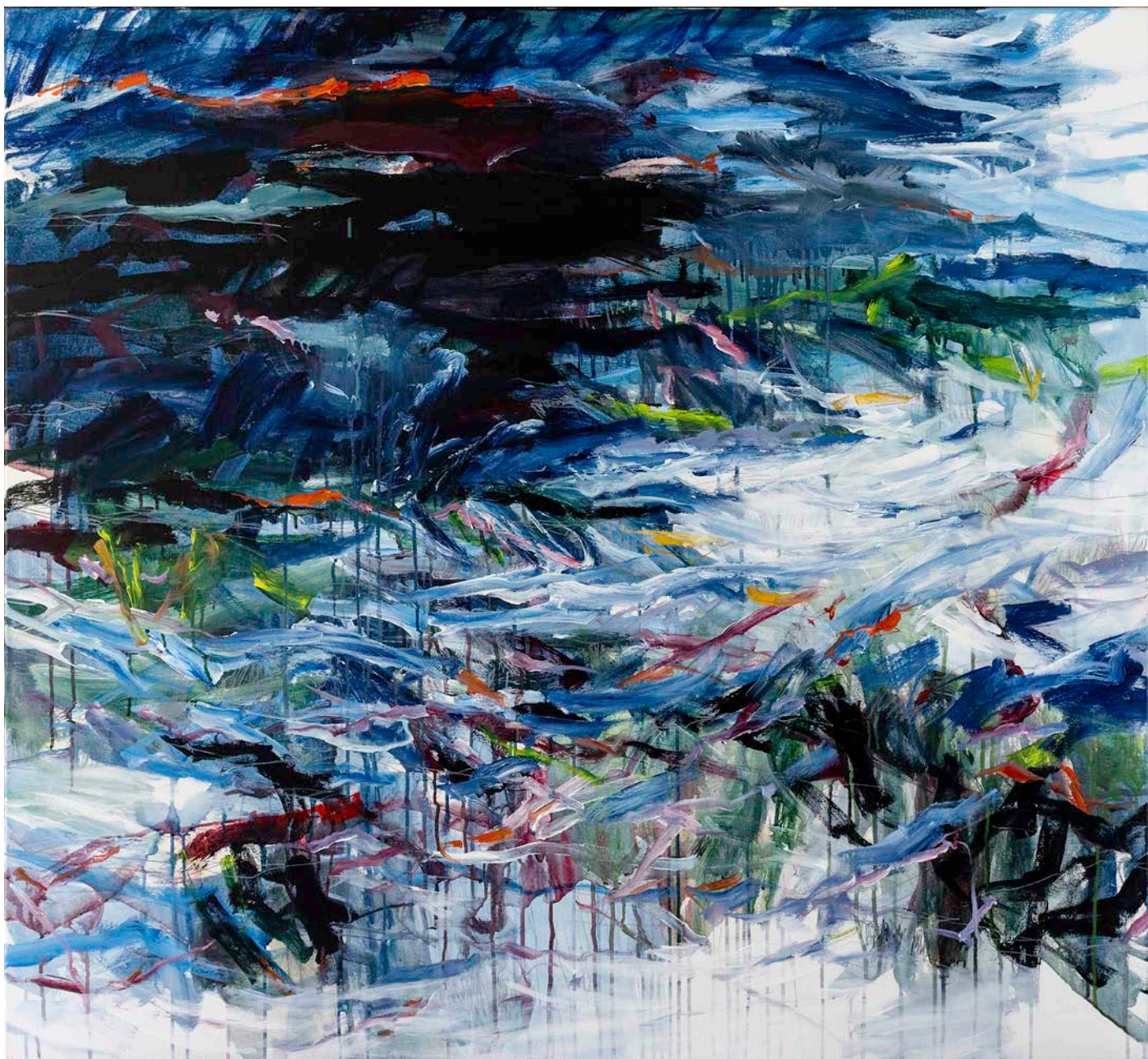


*Street's paintings are a broader reflection on the pulse of the environment, the rhythm of tides and traffic, and her connection to the city.*





*Dawn Swimming, 2025*  
Acrylic on canvas  
113 x 123 cm  
Framed in Tasmanian oak  
AUD 6,200



*Ebb and Flow I*, 2025  
Acrylic on canvas  
113 x 123 cm  
Framed in Tasmanian oak  
AUD 6,200



*Ebb and Flow II, 2025*  
Acrylic on canvas  
113 x 123 cm  
Framed in Tasmanian oak  
AUD 6,200



*Steer Your Own Ship II, 2025*  
Acrylic on canvas  
173 x 153 cm  
Framed in Tasmanian oak  
AUD 7,900



*Lighthouse, 2025*  
Acrylic on canvas  
113 x 123 cm  
Framed in Tasmanian oak  
AUD 6,200



*The Poetics of Space, 2025*  
Acrylic on canvas  
113 x 123 cm  
Framed in Tasmanian oak  
AUD 6,200



CURATORIAL+CO.

GALLERY + ART CONSULTANCY

ENQUIRIES TO SOPHIE VANDER, DIRECTOR  
curatorialandco.com | hello@curatorialandco.com  
80 William St, Woolloomooloo NSW 2011  
+61 2 9318 1728 | @curatorialandco

Photography courtesy of artist.